

SSH3BP1 Antibody

Catalog No: #35489

Orders: order@signalwayantibody.comSupport: tech@signalwayantibody.com

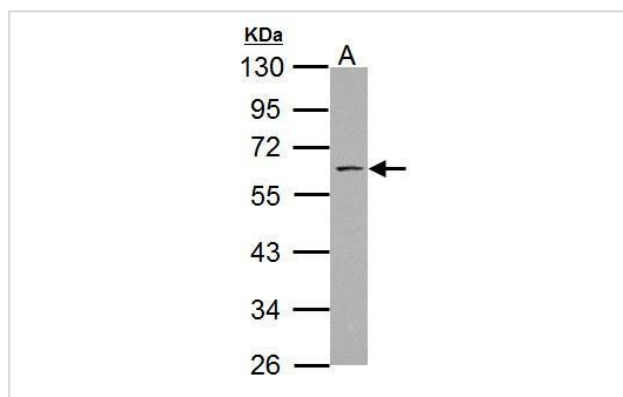
Description

Product Name	SSH3BP1 Antibody
Host Species	Rabbit
Clonality	Polyclonal
Purification	Antibodies were purified by antigen-affinity chromatography.
Applications	WB
Species Reactivity	Hu Rt Ms
Specificity	The antibody detects endogenous levels of total SSH3BP1 protein.
Immunogen Type	Recombinant Protein
Immunogen Description	Recombinant fragment contain a sequence corresponding to a region within amino acids 53 and 367 of SSH3BP1.
Target Name	SSH3BP1
Other Names	ABI-1 antibody; E3B1 antibody; NAP1BP antibody; SSH3BP antibody; SSH3BP1 antibody; ABI1 antibody; Abl-interactor protein 1 long antibody; nap1 binding protein antibody; abl interactor 1 antibody; spectrin SH3 domain-binding protein 1 antibody; eps8 SH3 do
Accession No.	Swiss-Prot#:Q8IZP0;NCBI Gene#:10006
Uniprot	Q8IZP0
GeneID	10006;
SDS-PAGE MW	55kd
Concentration	1mg/ml
Formulation	Rabbit IgG in 1XPBS, 20% Glycerol (pH7). 0.01% Thimerosal was added as a preservative.
Storage	Store at -20°C

Application Details

Western blotting: 1:500-1:3000

Images

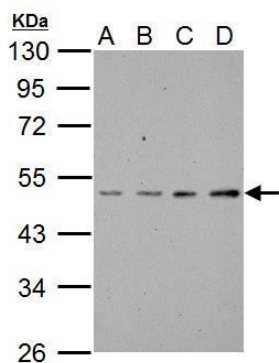


Sample (30 ug of whole cell lysate)

A: PC-3

10% SDS PAGE

#35489 diluted at 1:1000



SSH3BP1 antibody detects ABI1 protein by Western blot analysis. A. 30 μ g NIH-3T3 whole cell lysate/extract B. 30 μ g BCL-1 whole cell lysate/extract | C. 30 μ g Raw264.7 whole cell lysate/extract D. 30 μ g C2C12 whole cell lysate/extract 10 % SDS-PAGE #35494 dilution: 1:1000

Background

The protein encoded by this gene has been found to form a complex with EPS8 and SOS1, and is thought to be involved in the transduction of signals from Ras to Rac. In addition, the encoded protein may play a role in the regulation of EGF-induced Erk pathway activation as well as cytoskeletal reorganization and EGFR signaling. Several transcript variants encoding multiple isoforms have been found for this gene. [provided by RefSeq]

Note: This product is for in vitro research use only