

ROPN1B Antibody

Catalog No: #35501

Orders: order@signalwayantibody.comSupport: tech@signalwayantibody.com

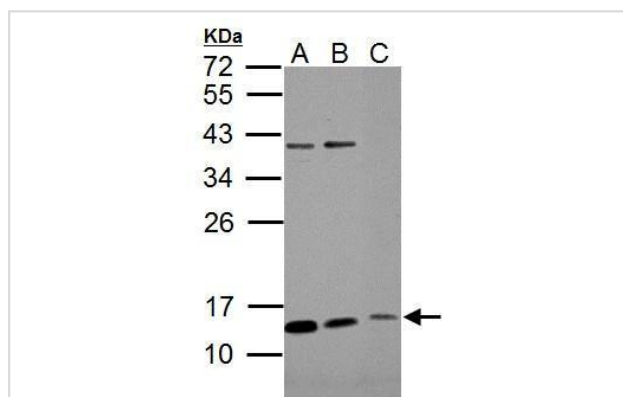
Description

Product Name	ROPN1B Antibody
Host Species	Rabbit
Clonality	Polyclonal
Purification	Antibodies were purified by antigen-affinity chromatography.
Applications	WB
Species Reactivity	Hu
Specificity	The antibody detects endogenous levels of total ROPN1B protein.
Immunogen Type	Recombinant Protein
Immunogen Description	Recombinant fragment contain a sequence corresponding to a region within amino acids 1 and 212 of ROPN1B.
Target Name	ROPN1B
Other Names	ROPN1B antibody; ropporin-1B antibody; rhophilin-associated protein 1B antibody; "ropporin; rhophilin associated protein 1B antibody"; AKAP-binding sperm protein ropporin antibody; rhophilin associated tail protein 1B antibody
Accession No.	Swiss-Prot#: Q9BZX4;NCBI Gene#:152015
Uniprot	Q9BZX4
GeneID	152015;
SDS-PAGE MW	24kd
Concentration	1mg/ml
Formulation	Rabbit IgG in 1XPBS, 20% Glycerol (pH7). 0.01% Thimerosal was added as a preservative.
Storage	Store at -20°C

Application Details

Western blotting: 1:500-1:3000

Images



Sample (30 ug of whole cell lysate)

A: A549

B: H1299

C: MCF-7

12% SDS PAGE

#35501 diluted at 1:1000

Background

ROPN1B Belongs to the ropporin family. 2 isoforms of the human protein are produced by alternative splicing.

Note: This product is for in vitro research use only