

cleavage stimulation factor Antibody

Catalog No: #35503



Orders: order@signalwayantibody.com
Support: tech@signalwayantibody.com

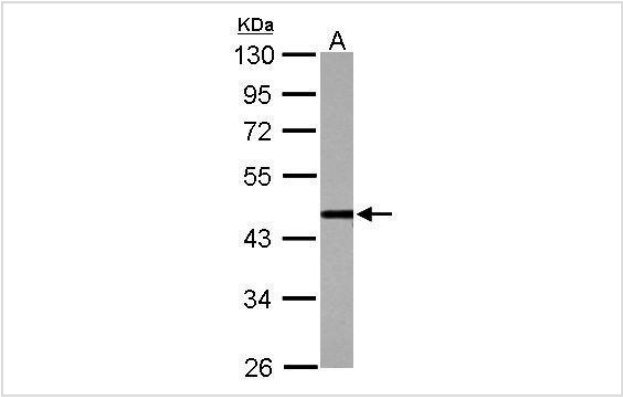
Description

Product Name	cleavage stimulation factor Antibody
Host Species	Rabbit
Clonality	Polyclonal
Purification	Antibodies were purified by antigen-affinity chromatography.
Applications	WB
Species Reactivity	Hu
Specificity	The antibody detects endogenous levels of total cleavage stimulation factor protein.
Immunogen Type	Recombinant Protein
Immunogen Description	Recombinant fragment corresponding to a region within amino acids 185 and 408 of cleavage stimulation factor.
Target Name	cleavage stimulation factor
Other Names	CstF-50 antibody; CstFp50 antibody; CSTF1 antibody; cleavage stimulation factor subunit 1 antibody; cleavage stimulation factor 50 kDa subunit antibody; CF-1 50 kDa subunit antibody; CSTF 50 kDa subunit antibody; "cleavage stimulation factor; 3' pre-RNA;
Accession No.	Swiss-Prot#:Q05048;NCBI Gene#:1477
Uniprot	Q05048
GeneID	1477;
SDS-PAGE MW	48kd
Concentration	1mg/ml
Formulation	Rabbit IgG in 1XPBS, 1%BSA, 20% Glycerol (pH7). 0.01% Thimerosal was added as a preservative.
Storage	Store at -20°C

Application Details

Western blotting: 1:500-1:3000

Images



Sample (30 ug of whole cell lysate)
A: Jurkat
10% SDS PAGE
#35503 diluted at 1:1000

Background

This gene encodes one of three subunits which combine to form cleavage stimulation factor (CSTF). CSTF is involved in the polyadenylation and 3'end cleavage of pre-mRNAs. Similar to mammalian G protein beta subunits, this protein contains transducin-like repeats. Several transcript variants with different 5' UTR, but encoding the same protein, have been found for this gene. [provided by RefSeq]

Note: This product is for in vitro research use only