

Alpha 1 antitrypsin Antibody

Catalog No: #35507



Orders: order@signalwayantibody.com
Support: tech@signalwayantibody.com

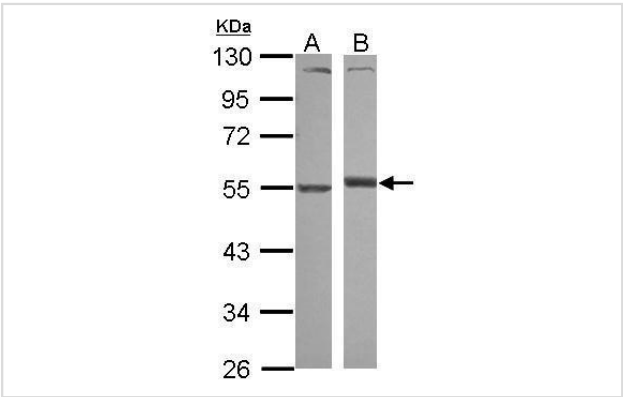
Description

Product Name	Alpha 1 antitrypsin Antibody
Host Species	Rabbit
Clonality	Polyclonal
Purification	Antibodies were purified by antigen-affinity chromatography.
Applications	WB
Species Reactivity	Hu
Specificity	The antibody detects endogenous levels of total Alpha 1 antitrypsin protein.
Immunogen Type	Recombinant Protein
Immunogen Description	Recombinant fragment corresponding to a region within amino acids 6 and 342 of Alpha 1 antitrypsin.
Target Name	Alpha 1 antitrypsin
Other Names	A1A antibody; A1AT antibody; AAT antibody; MGC23330 antibody; MGC9222 antibody; PI antibody; PI1 antibody; PRO2275 antibody; alpha1AT antibody; SERPINA1 antibody; serpin A1 antibody; alpha-1 protease inhibitor antibody; "serine (or cysteine) proteinase in
Accession No.	Swiss-Prot#:P01009;NCBI Gene#:5265
Uniprot	P01009
GeneID	5265;
SDS-PAGE MW	47kd
Concentration	0.81mg/ml
Formulation	Rabbit IgG in 0.1M Tris, 0.1M Glycine, 20% Glycerol (pH7). 0.01% Thimerosal was added as a preservative.
Storage	Store at -20°C

Application Details

Western blotting: 1:500-1:3000

Images



Sample (30 ug of whole cell lysate)
A: A549
B: HepG2
10% SDS PAGE
#35507 diluted at 1:1000

Background

The protein encoded by this gene is secreted and is a serine protease inhibitor whose targets include elastase, plasmin, thrombin, trypsin, chymotrypsin, and plasminogen activator. Defects in this gene can cause emphysema or liver disease. Several transcript variants encoding the same protein have been found for this gene. [provided by RefSeq]

Note: This product is for in vitro research use only