

## Glucagon Antibody

Catalog No: #35510

Orders: order@signalwayantibody.com

Support: tech@signalwayantibody.com

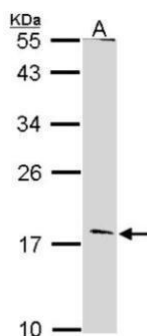
## Description

Product Name	Glucagon Antibody
Host Species	Rabbit
Clonality	Polyclonal
Purification	Antibodies were purified by antigen-affinity chromatography.
Applications	WB
Species Reactivity	Hu
Specificity	The antibody detects endogenous levels of total Glucagon protein.
Immunogen Type	Recombinant Protein
Immunogen Description	Recombinant fragment corresponding to a region within amino acids 1 and 180 of Glucagon.
Target Name	Glucagon
Other Names	GLP1 antibody; GLP2 antibody; GRPP antibody; GCG antibody; glicentin-related polypeptide antibody; glucagon antibody; glucagon-like peptide 2 antibody; glucagon-like peptide 1 antibody
Accession No.	Swiss-Prot#:P01275;NCBI Gene#:2641
Uniprot	P01275
GeneID	2641;
SDS-PAGE MW	21kd
Concentration	1.02mg/ml
Formulation	Rabbit IgG in 0.1M Tris, 0.1M Glycine, 10% Glycerol (pH7). 0.01% Thimerosal was added as a preservative.
Storage	Store at -20°C

## Application Details

Western blotting: 1:500-1:3000

## Images



Sample (30 ug of whole cell lysate)

A: Raji

12% SDS PAGE

#35510 diluted at 1:500

## Background

The protein encoded by this gene is actually a preproprotein that is cleaved into four distinct mature peptides. One of these, glucagon, is a pancreatic

hormone that counteracts the glucose-lowering action of insulin by stimulating glycogenolysis and gluconeogenesis. Glucagon is a ligand for a specific G-protein linked receptor whose signalling pathway controls cell proliferation. Two of the other peptides are secreted from gut endocrine cells and promote nutrient absorption through distinct mechanisms. Finally, the fourth peptide is similar to glicentin, an active enteroglucagon. [provided by RefSeq]

---

Note: This product is for in vitro research use only