

alpha smooth muscle Actin Antibody

Catalog No: #35513



Orders: order@signalwayantibody.com
Support: tech@signalwayantibody.com

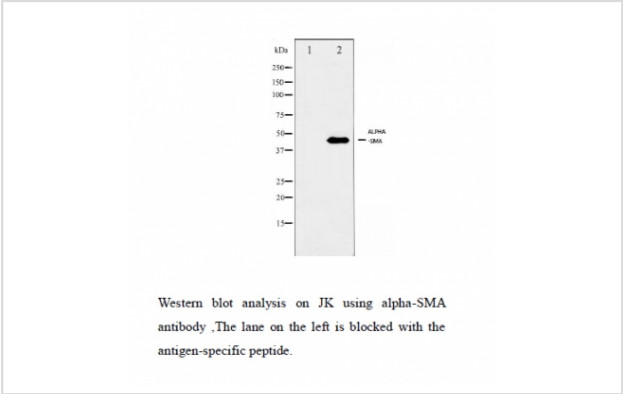
Description

Product Name	alpha smooth muscle Actin Antibody
Host Species	Rabbit
Clonality	Polyclonal
Purification	Antibodies were purified by antigen-affinity chromatography.
Applications	WB
Species Reactivity	Hu Ms Rt
Specificity	The antibody detects endogenous levels of total alpha smooth muscle Actin protein.
Immunogen Type	Recombinant Protein
Immunogen Description	Synthetic peptide corresponding to N terminal residues of Human alpha smooth muscle Actin.
Target Name	alpha smooth muscle Actin
Other Names	AAT6 antibody; ACTSA antibody; ACTA2 antibody; "actin; aortic smooth muscle antibody"; cell growth-inhibiting gene 46 protein antibody; growth-inhibiting gene 46 antibody; alpha 2 actin antibody; alpha-actin-2 antibody; alpha-cardiac actin antibody; "acti
Accession No.	Swiss-Prot#:P62736;NCBI Gene#:59
Uniprot	P62736
GeneID	59;
SDS-PAGE MW	42kd
Concentration	1mg/ml
Formulation	Rabbit IgG in phosphate buffered saline , pH 7.4, 150mM NaCl, 0.02% sodium azide and 50% glycerol.
Storage	Store at -20°C

Application Details

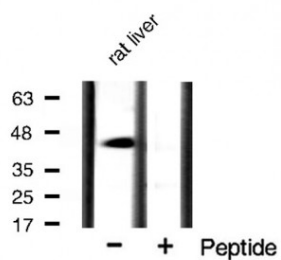
Western blotting: 1:500-1:1000

Images



Western blot analysis on JK using alpha smooth muscle Actin antibody ,The lane on the left is blocked with the antigen-specific peptide.

Western blot analysis on rat liver using alpha smooth muscle Actinantibody ,The lane on the right is blocked with the antigen-specific peptide.



Background

The protein encoded by this gene belongs to the actin family of proteins, which are highly conserved proteins that play a role in cell motility, structure and integrity. Alpha, beta and gamma actin isoforms have been identified, with alpha actins being a major constituent of the contractile apparatus, while beta and gamma actins are involved in the regulation of cell motility. This actin is an alpha actin that is found in skeletal muscle. Defects in this gene cause aortic aneurysm familial thoracic type 6. Multiple alternatively spliced variants, encoding the same protein, have been identified. [provided by RefSeq]

Note: This product is for in vitro research use only