

## ARF6 Antibody

Catalog No: #35514

Orders: [order@signalwayantibody.com](mailto:order@signalwayantibody.com)Support: [tech@signalwayantibody.com](mailto:tech@signalwayantibody.com)

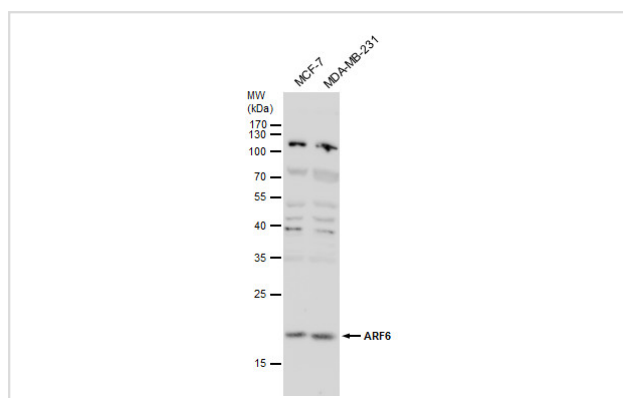
## Description

Product Name	ARF6 Antibody
Host Species	Rabbit
Clonality	Polyclonal
Purification	Antibodies were purified by antigen-affinity chromatography.
Applications	WB
Species Reactivity	Ms
Specificity	The antibody detects endogenous levels of total ARF6 protein.
Immunogen Type	Recombinant Protein
Immunogen Description	Recombinant fragment corresponding to a region within amino acids 1 and 175 of ARF6.
Target Name	ARF6
Other Names	DKFZp564M0264 antibody; ARF6 antibody; ADP-ribosylation factor 6 antibody
Accession No.	Swiss-Prot#:P62330;NCBI Gene#:382
Uniprot	P62330
GeneID	382;
SDS-PAGE MW	20kd
Concentration	0.89mg/ml
Formulation	Rabbit IgG in 0.1M Tris, 0.1M Glycine, 20% Glycerol (pH7). 0.01% Thimerosal was added as a preservative.
Storage	Store at -20°C

## Application Details

Western blotting: 1:500-1:3000

## Images



ARF6 antibody detects ARF6 protein by western blot analysis. Various whole cell extracts (30 µg) were separated by 12 % SDS-PAGE, and blotted with ARF6 antibody #35514 diluted at 1:1000

## Background

This gene encodes a member of the human ARF gene family, which is part of the RAS superfamily. The ARF genes encode small guanine nucleotide-binding proteins that stimulate the ADP-ribosyltransferase activity of cholera toxin and play a role in vesicular trafficking and as activators of

phospholipase D. The product of this gene is localized to the plasma membrane, and regulates vesicular trafficking, remodelling of membrane lipids, and signaling pathways that lead to actin remodeling. A pseudogene of this gene is located on chromosome 7. [provided by RefSeq]

---

Note: This product is for in vitro research use only