

EDG2 Antibody

Catalog No: #35515



Orders: [order@signalwayantibody.com](mailto:order@signalwayantibody.com)  
Support: [tech@signalwayantibody.com](mailto:tech@signalwayantibody.com)

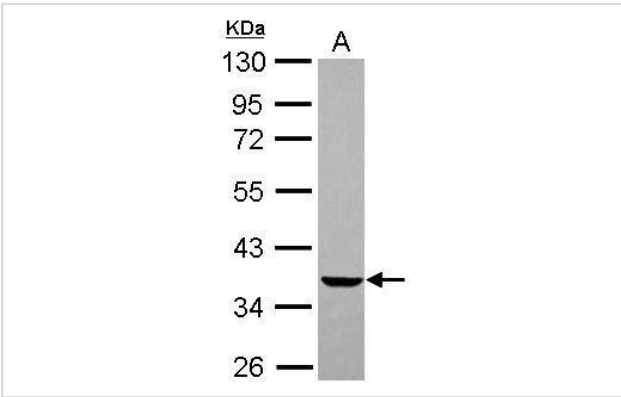
Description

Product Name	EDG2 Antibody
Host Species	Rabbit
Clonality	Polyclonal
Purification	Antibodies were purified by antigen-affinity chromatography.
Applications	WB
Species Reactivity	Hu
Specificity	The antibody detects endogenous levels of total EDG2 protein.
Immunogen Type	Recombinant Protein
Immunogen Description	Recombinant fragment contain a sequence corresponding to a region within amino acids 1 and 179 of EDG2.
Target Name	EDG2
Other Names	EDG2 antibody; GPR26 antibody; Gpcr26 antibody; LPA1 antibody; Mrec1.3 antibody; VZG1 antibody; edg-2 antibody; rec.1.3 antibody; vzg-1 antibody; LPAR1 antibody; lysophosphatidic acid receptor 1 antibody; ventricular zone gene 1 antibody; lysophosphatidic
Accession No.	Swiss-Prot#:Q92633;NCBI Gene#:1902
Uniprot	Q92633
GeneID	1902;
SDS-PAGE MW	41kd
Concentration	0.7mg/ml
Formulation	Rabbit IgG in 0.1M Tris, 0.1M Glycine, 20% Glycerol (pH7). 0.01% Thimerosal was added as a preservative.
Storage	Store at -20°C

Application Details

Western blotting: 1:500-1:3000

Images



Sample (30 ug of whole cell lysate)  
A: U87-MG  
10% SDS PAGE  
#35515 diluted at 1:1000

## Background

---

The integral membrane protein encoded by this gene is a lysophosphatidic acid (LPA) receptor from a group known as EDG receptors. These receptors are members of the G protein-coupled receptor superfamily. Utilized by LPA for cell signaling, EDG receptors mediate diverse biologic functions, including proliferation, platelet aggregation, smooth muscle contraction, inhibition of neuroblastoma cell differentiation, chemotaxis, and tumor cell invasion. Two transcript variants encoding the same protein have been identified for this gene [provided by RefSeq]

---

Note: This product is for in vitro research use only