

ERG Antibody

Catalog No: #35523



Orders: [order@signalwayantibody.com](mailto:order@signalwayantibody.com)  
Support: [tech@signalwayantibody.com](mailto:tech@signalwayantibody.com)

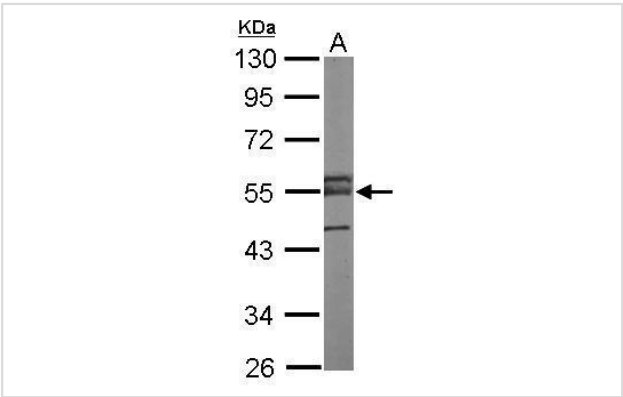
Description

|                       |   |
|-----------------------|---|
| Product Name          | ERG Antibody  |
| Host Species          | Rabbit  |
| Clonality             | Polyclonal  |
| Purification          | Antibodies were purified by antigen-affinity chromatography.  |
| Applications          | WB  |
| Species Reactivity    | Hu Ms   |
| Specificity           | The antibody detects endogenous levels of total ERG protein.  |
| Immunogen Type        | Recombinant Protein   |
| Immunogen Description | Recombinant fragment corresponding to a region within amino acids 243 and 486 of ERG.   |
| Target Name           | ERG   |
| Other Names           | erg-3 antibody; p55 antibody; ERG antibody; transcriptional regulator ERG antibody; v-ets erythroblastosis virus E26 oncogene like antibody; v-ets avian erythroblastosis virus E26 oncogene related antibody; transcriptional regulator ERG (transforming prot |
| Accession No.         | Swiss-Prot#:P11308;NCBI Gene#:2078  |
| Uniprot               | P11308  |
| GeneID                | 2078;   |
| SDS-PAGE MW           | 55kd  |
| Concentration         | 1mg/ml  |
| Formulation           | Rabbit IgG in 0.1M Tris, 0.1M Glycine, 10% Glycerol (pH7). 0.01% Thimerosal was added as a preservative.  |
| Storage               | Store at -20°C  |

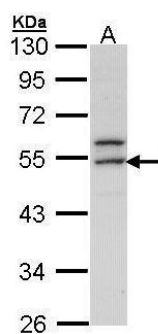
Application Details

Western blotting: 1:500-1:3000

Images



Sample (50 ug of whole cell lysate)  
A: Mouse brain  
10% SDS PAGE  
#35523 diluted at 1:1000



Sample (30 ug of whole cell lysate)

A: Molt-4

10% SDS PAGE

#35523 diluted at 1:1000

## Background

ERG Transcriptional regulator. May participate in transcriptional regulation through the recruitment of SETDB1 histone methyltransferase and subsequent modification of local chromatin structure. Defects in ERG are a cause of Ewing sarcoma (ES). A highly malignant, metastatic, primitive small round cell tumor of bone and soft tissue that affects children and adolescents. It belongs to the Ewing sarcoma family of tumors, a group of morphologically heterogeneous neoplasms that share the same cytogenetic features. They are considered neural tumors derived from cells of the neural crest. Ewing sarcoma represents the less differentiated form of the tumors. A chromosomal aberration involving ERG is found in patients with Erwing sarcoma. Translocation t(21;22)(q22;q12) with EWSR1. Chromosomal aberrations involving ERG have been found in acute myeloid leukemia (AML). Translocation t(16;21)(p11;q22) with FUS. Translocation t(X;21)(q25-26;q22) with ELF4. Belongs to the ETS family. 6 isoforms of the human protein are produced by alternative splicing.

Note: This product is for in vitro research use only