

CETP Antibody

Catalog No: #35526

Orders: order@signalwayantibody.com

Support: tech@signalwayantibody.com

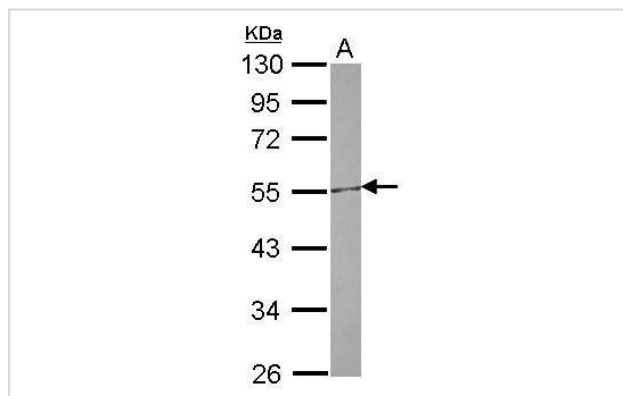
Description

Product Name	CETP Antibody
Host Species	Rabbit
Clonality	Polyclonal
Purification	Antibodies were purified by antigen-affinity chromatography.
Applications	WB
Species Reactivity	Hu
Specificity	The antibody detects endogenous levels of total CETP protein.
Immunogen Type	Recombinant Protein
Immunogen Description	Recombinant fragment corresponding to a region within amino acids 4 and 222 of CETP.
Target Name	CETP
Other Names	HDLCQ10 antibody; CETP antibody; BPI fold containing family F antibody; lipid transfer protein I antibody; cholesteryl ester transfer protein antibody; "cholesteryl ester transfer protein; plasma antibody"
Accession No.	Swiss-Prot#:P11597;NCBI Gene#:1071
Uniprot	P11597
GeneID	1071;
SDS-PAGE MW	55kd
Concentration	1mg/ml
Formulation	Rabbit IgG in 1XPBS, 1%BSA, 20% Glycerol (pH7). 0.01% Thimerosal was added as a preservative.
Storage	Store at -20°C

Application Details

Western blotting: 1:500-1:3000

Images



Sample (30 ug of whole cell lysate)
A: HepG2
10% SDS PAGE
#35526 diluted at 1:500

Background

Cholesteryl ester transfer protein (CETP) transfers cholesteryl esters between lipoproteins. CETP may effect susceptibility to atherosclerosis.

Note: This product is for in vitro research use only