

ACTB Antibody

Catalog No: #35532

Orders: order@signalwayantibody.comSupport: tech@signalwayantibody.com

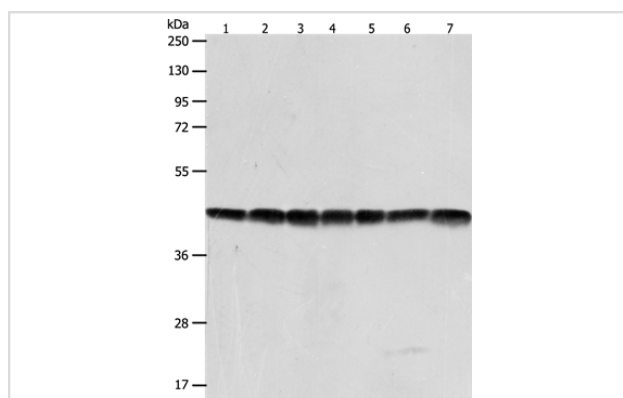
Description

Product Name	ACTB Antibody
Host Species	Rabbit
Clonality	Polyclonal
Purification	Antigen affinity purification.
Applications	WB
Species Reactivity	Hu Ms
Specificity	The antibody detects endogenous levels of total ACTB protein.
Immunogen Type	Peptide
Immunogen Description	Synthetic peptide corresponding to residues near the N terminal of human Actin, beta
Target Name	ACTB
Other Names	BRWS1; PS1TP5BP1
Accession No.	Swiss-Prot#: P60709NCBI Gene ID: 60Gene Accssion: NP_001092
Uniprot	P60709
GeneID	60;
SDS-PAGE MW	42kd
Concentration	1.6mg/ml
Formulation	Rabbit IgG in pH7.4 PBS, 0.05% NaN ₃ , 40% Glycerol.
Storage	Store at -20°C

Application Details

Western blotting: 1:1000-1:5000

Images



Gel: 10%SDS-PAGE

Lysates (from left to right): HeLa, Jurkat and NIH/3T3 cell,
human fetal liver and mouse brain tissue, A431 and 293T cell

Amount of lysate: 40ug per lane

Primary antibody: 1/600 dilution

Secondary antibody dilution: 1/8000

Exposure time: 7 seconds

Background

This gene encodes one of six different actin proteins. Actins are highly conserved proteins that are involved in cell motility, structure, and integrity. This actin is a major constituent of the contractile apparatus and one of the two nonmuscle cytoskeletal actins. Polymerization of globular actin (G-actin)

leads to a structural filament (F-actin) in the form of a two-stranded helix. Each actin can bind to 4 others. Identified in a mRNP granule complex, at least composed of ACTB, ACTN4, DHX9, ERG, HNRNPA1, HNRNPA2B1, HNRNPAB, HNRNPD, HNRNPL, HNRNPR, HNRNPU, HSPA1, HSPA8, IGF2BP1, ILF2, ILF3, NCBP1, NCL, PABPC1, PABPC4, PABPN1, RPLP0, RPS3, RPS3A, RPS4X, RPS8, RPS9, SYNCRIP, TROVE2, YBX1 and untranslated mRNAs.

Note: This product is for in vitro research use only