

ALB Antibody

Catalog No: #35541

Orders: order@signalwayantibody.comSupport: tech@signalwayantibody.com

Description

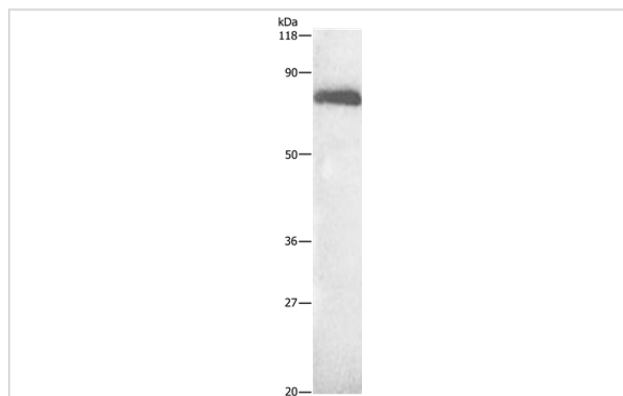
Product Name	ALB Antibody
Host Species	Rabbit
Clonality	Polyclonal
Purification	Antigen affinity purification.
Applications	WB IHC
Species Reactivity	Hu
Specificity	The antibody detects endogenous levels of total ALB protein.
Immunogen Type	Recombinant Protein
Immunogen Description	Fusion protein corresponding to a region derived from internal residues of human Serum albumin
Target Name	ALB
Other Names	PRO0883; PRO0903; PRO1341
Accession No.	Swiss-Prot#: P02768NCBI Gene ID: 213Gene Accssion: BC039235
Uniprot	P02768
GeneID	213;
SDS-PAGE MW	70kd
Concentration	1.1mg/ml
Formulation	Rabbit IgG in pH7.4 PBS, 0.05% NaN ₃ , 40% Glycerol.
Storage	Store at -20°C

Application Details

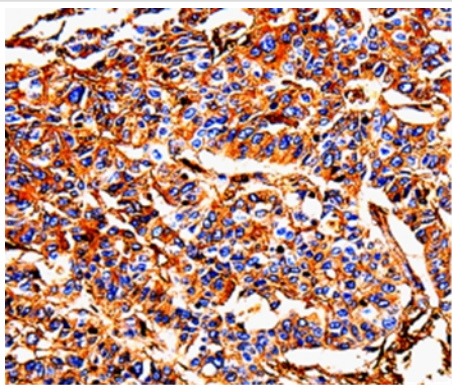
Western blotting: 1:500-1:2000

Immunohistochemistry: 1:25-1:50

Images



Gel: 10%SDS-PAGE
Lysate: 20ug HepG2 cell
Primary antibody: 1/500 dilution
Secondary antibody dilution: 1/8000
Exposure time: 1 minute



Immunohistochemical analysis of paraffin-embedded Human liver cancer tissue using #35541 at dilution 1/25.

Background

Albumin is a soluble, monomeric protein which comprises about one-half of the blood serum protein. Albumin functions primarily as a carrier protein for steroids, fatty acids, and thyroid hormones and plays a role in stabilizing extracellular fluid volume. Albumin is a globular unglycosylated serum protein of molecular weight 65,000. Albumin is synthesized in the liver as preproalbumin which has an N-terminal peptide that is removed before the nascent protein is released from the rough endoplasmic reticulum. The product, proalbumin, is in turn cleaved in the Golgi vesicles to produce the secreted albumin.

Note: This product is for in vitro research use only