

MAT1A Antibody

Catalog No: #35551

Orders: order@signalwayantibody.comSupport: tech@signalwayantibody.com

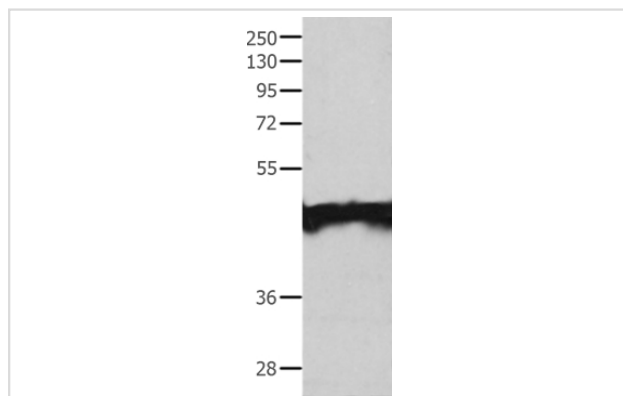
Description

Product Name	MAT1A Antibody
Host Species	Rabbit
Clonality	Polyclonal
Purification	Antigen affinity purification.
Applications	WB
Species Reactivity	Hu
Specificity	The antibody detects endogenous levels of total MAT1A protein.
Immunogen Type	Recombinant Protein
Immunogen Description	Fusion protein corresponding to a region derived from internal residues of human methionine adenosyltransferase I, alpha
Target Name	MAT1A
Other Names	MAT; SAMS; MATA1; SAMS1
Accession No.	Swiss-Prot#: Q00266NCBI Gene ID: 4143Gene Accssion: BC018359
Uniprot	Q00266
GeneID	4143;
SDS-PAGE MW	44kd
Concentration	0.4mg/ml
Formulation	Rabbit IgG in pH7.4 PBS, 0.05% NaN ₃ , 40% Glycerol.
Storage	Store at -20°C

Application Details

Western blotting: 1:500-1:2000

Images



Gel: 10%SDS-PAGE
Lysate: 40ug Jurkat cell
Primary antibody: 1/200 dilution
Secondary antibody dilution: 1/8000
Exposure time: 2 minutes

Background

This gene catalyzes a two-step reaction that involves the transfer of the adenosyl moiety of ATP to methionine to form S-adenosylmethionine and

tripolyphosphate, which is subsequently cleaved to PPi and Pi. S-adenosylmethionine is the source of methyl groups for most biological methylations. The encoded protein is found as a homotetramer (MAT I) or a homodimer (MAT III) whereas a third form, MAT II (gamma), is encoded by the MAT2A gene. Mutations in this gene are associated with methionine adenosyltransferase deficiency.

Note: This product is for in vitro research use only