

BOLL Antibody

Catalog No: #35553

Orders: order@signalwayantibody.comSupport: tech@signalwayantibody.com

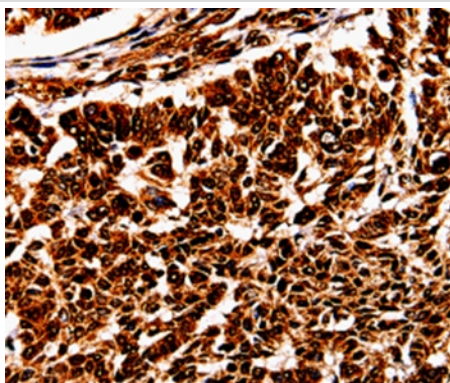
Description

Product Name	BOLL Antibody
Host Species	Rabbit
Clonality	Polyclonal
Purification	Antigen affinity purification.
Applications	IHC
Species Reactivity	Hu
Specificity	The antibody detects endogenous levels of total BOLL protein.
Immunogen Type	Recombinant Protein
Immunogen Description	Full length fusion protein
Target Name	BOLL
Other Names	BOULE
Accession No.	Swiss-Prot#: Q8N9W6NCBI Gene ID: 66037Gene Accssion: BC033674
Uniprot	Q8N9W6
GeneID	66037;
Concentration	2.7mg/ml
Formulation	Rabbit IgG in pH7.4 PBS, 0.05% NaN ₃ , 40% Glycerol.
Storage	Store at -20°C

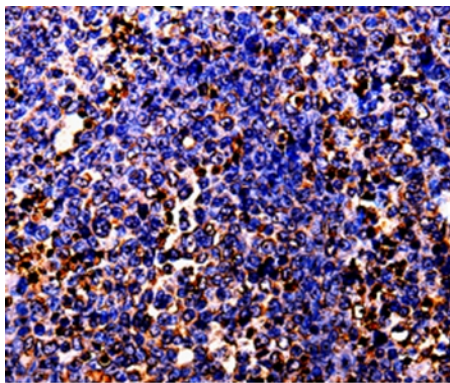
Application Details

Immunohistochemistry: 1:25-1:50

Images



Immunohistochemical analysis of paraffin-embedded Human ovarian cancer tissue using #35553 at dilution 1/10.



Immunohistochemical analysis of paraffin-embedded Human lung cancer tissue using #35553 at dilution 1/10.

Background

This gene belongs to the DAZ gene family required for germ cell development. It encodes an RNA-binding protein which is more similar to *Drosophila* Boule than to human proteins encoded by genes DAZ (deleted in azoospermia) or DAZL (deleted in azoospermia-like). Loss of this gene function results in the absence of sperm in semen (azoospermia). Histological studies demonstrated that the primary defect is at the meiotic G2/M transition. Two alternatively spliced transcript variants encoding distinct isoforms have been found for this gene.

Note: This product is for in vitro research use only