

## RBM1A1 Antibody

Catalog No: #35556

Orders: [order@signalwayantibody.com](mailto:order@signalwayantibody.com)Support: [tech@signalwayantibody.com](mailto:tech@signalwayantibody.com)

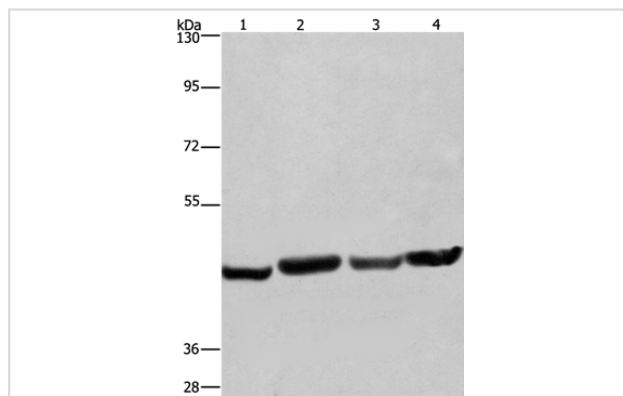
## Description

Product Name	RBM1A1 Antibody
Host Species	Rabbit
Clonality	Polyclonal
Purification	Antigen affinity purification.
Applications	WB
Species Reactivity	Hu
Specificity	The antibody detects endogenous levels of total RBMY1A1 protein.
Immunogen Type	Recombinant Protein
Immunogen Description	Fusion protein corresponding to a region derived from internal residues of human RNA binding motif protein, Y-linked, family 1, member A1
Target Name	RBM1A1
Other Names	RBM; RBM1; RBM2; RBMY; YRRM1; YRRM2; RBMY1C
Accession No.	Swiss-Prot#: P0DJD3NCBI Gene ID: 5940Gene Accssion: BC070298
Uniprot	P0DJD3
GeneID	378949;5940;
SDS-PAGE MW	56kd
Concentration	1.8mg/ml
Formulation	Rabbit IgG in pH7.4 PBS, 0.05% NaN <sub>3</sub> , 40% Glycerol.
Storage	Store at -20°C

## Application Details

Western blotting: 1:500-1:2000

## Images



Gel: 6%SDS-PAGE

Lysates (from left to right): A549, HeLa, PC3 and HepG2 cell

Amount of lysate: 40ug per lane

Primary antibody: 1/360 dilution

Secondary antibody dilution: 1/8000

Exposure time: 30 seconds

## Background

This gene encodes a protein containing an RNA-binding motif in the N-terminus and four SRGY (serine, arginine, glycine, tyrosine) boxes in the

C-terminus. Multiple copies of this gene are found in the AZFb azoospermia factor region of chromosome Y and the encoded protein is thought to be involved in spermatogenesis. Most copies of this locus are pseudogenes, although six highly similar copies have full-length ORFs and are considered functional. Four functional copies of this gene are found within inverted repeat IR2; two functional copies of this gene are found in palindrome P3, along with two copies of PTPN13-like, Y-linked.

---

Note: This product is for in vitro research use only