

TGIF2LX Antibody

Catalog No: #35559

Orders: order@signalwayantibody.comSupport: tech@signalwayantibody.com

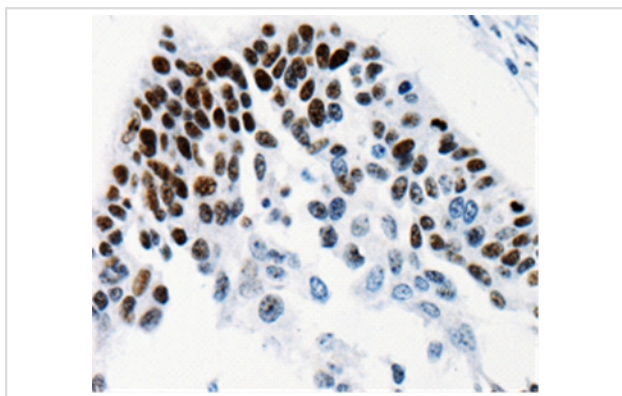
Description

| | |
|-----------------------|---|
| Product Name | TGIF2LX Antibody |
| Host Species | Rabbit |
| Clonality | Polyclonal |
| Purification | Antigen affinity purification. |
| Applications | IHC |
| Species Reactivity | Hu |
| Specificity | The antibody detects endogenous levels of total TGIF2LX protein. |
| Immunogen Type | Recombinant Protein |
| Immunogen Description | Fusion protein corresponding to residues near the N terminal of human TGFB-induced factor homeobox 2-like, X-linked |
| Target Name | TGIF2LX |
| Other Names | TGIFLX |
| Accession No. | Swiss-Prot#: Q8IUE1NCBI Gene ID: 90316Gene Accssion: BC117398 |
| Uniprot | Q8IUE1 |
| GeneID | 90316; |
| Concentration | 0.8mg/ml |
| Formulation | Rabbit IgG in pH7.4 PBS, 0.05% NaN ₃ , 40% Glycerol. |
| Storage | Store at -20°C |

Application Details

Immunohistochemistry: 1:25-1:100

Images



Immunohistochemical analysis of paraffin-embedded Human cervical cancer tissue using #35559 at dilution 1/25.

Background

This gene encodes a member of the TALE/TGIF homeobox family of transcription factors. Testis-specific expression suggests that this gene may play a role in spermatogenesis. A homolog of this gene lies within the male specific region of chromosome Y, in a block of sequence that is thought to be

the result of a large X-to-Y transposition.

Note: This product is for in vitro research use only