

ADAP1 Antibody

Catalog No: #35561

Orders: order@signalwayantibody.comSupport: tech@signalwayantibody.com

Description

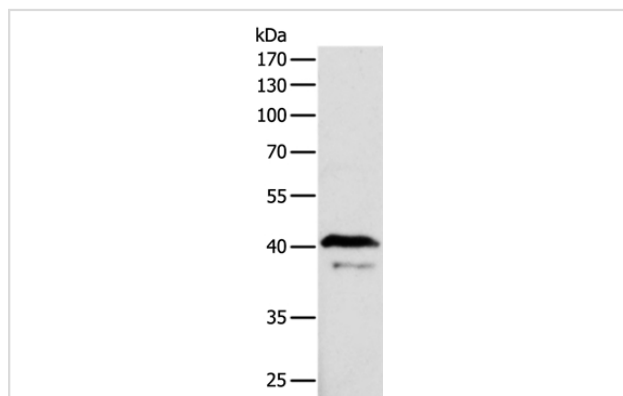
Product Name	ADAP1 Antibody
Host Species	Rabbit
Clonality	Polyclonal
Purification	Antigen affinity purification.
Applications	WB IHC
Species Reactivity	Hu Ms
Specificity	The antibody detects endogenous levels of total ADAP1 protein.
Immunogen Type	Recombinant Protein
Immunogen Description	Fusion protein corresponding to residues near the N terminal of human Arf-GAP with dual PH domain-containing protein 1
Target Name	ADAP1
Other Names	GCS1L; CENTA1; p42IP4
Accession No.	Swiss-Prot#: O75689NCBI Gene ID: 11033Gene Accssion: BC033747
Uniprot	O75689
GeneID	11033;
SDS-PAGE MW	43kd
Concentration	0.8mg/ml
Formulation	Rabbit IgG in pH7.4 PBS, 0.05% NaN ₃ , 40% Glycerol.
Storage	Store at -20°C

Application Details

Western blotting: 1:200-1:1000

Immunohistochemistry: 1:100-1:200

Images



Gel: 10%SDS-PAGE

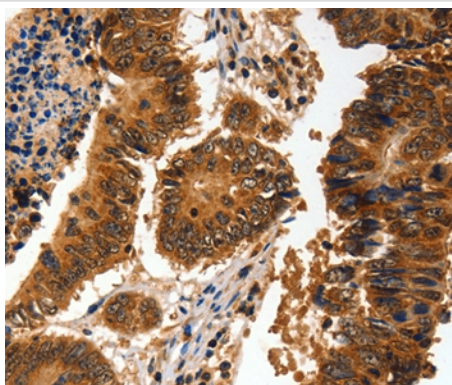
Lysates (from left to right): Mouse brain tissue

Amount of lysate: 40ug per lane

Primary antibody: 1/500 dilution

Secondary antibody dilution: 1/8000

Exposure time: 15 seconds



Immunohistochemical analysis of paraffin-embedded Human colon cancer tissue using #35561 at dilution 1/100.

Background

Arf-GAP with dual PH domain-containing protein 1 is a protein that in humans is encoded by the ADAP1 gene. GTPase-activating protein for the ADP ribosylation factor family. Binds phosphatidylinositol 3,4,5-trisphosphate (PtdInsP3) and inositol 1,3,4,5-tetrakisphosphate (InsP4).

Note: This product is for in vitro research use only