

## COX16 Antibody

Catalog No: #35580

Orders: [order@signalwayantibody.com](mailto:order@signalwayantibody.com)Support: [tech@signalwayantibody.com](mailto:tech@signalwayantibody.com)

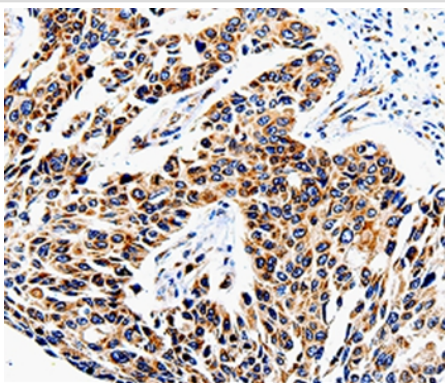
## Description

Product Name	COX16 Antibody
Host Species	Rabbit
Clonality	Polyclonal
Purification	Antigen affinity purification.
Applications	IHC
Species Reactivity	Hu
Specificity	The antibody detects endogenous levels of total COX16 protein.
Immunogen Type	Recombinant Protein
Immunogen Description	Fusion protein corresponding to a region derived from internal residues of human COX16 cytochrome c oxidase assembly homolog (S. cerevisiae)
Target Name	COX16
Other Names	HSPC203; C14orf112
Accession No.	Swiss-Prot#: Q9P0S2NCBI Gene ID: 51241Gene Accssion: BC001702
Uniprot	Q9P0S2
GeneID	51241;
Concentration	1.2mg/ml
Formulation	Rabbit IgG in pH7.4 PBS, 0.05% NaN <sub>3</sub> , 40% Glycerol.
Storage	Store at -20°C

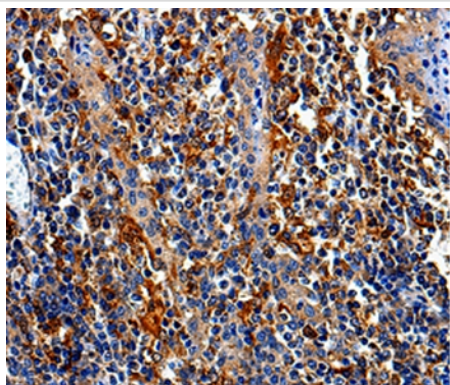
## Application Details

Immunohistochemistry: 1:25-1:100

## Images



Immunohistochemical analysis of paraffin-embedded Human tonsil cancer tissue using #35580 at dilution 1/50.



Immunohistochemical analysis of paraffin-embedded Human lung cancer tissue using #35580 at dilution 1/50.

## Background

This protein is encoded by COX16, corresponding to the previously uncharacterized open reading frame YJL003w of the yeast genome. COX16 was identified in studies of COX-deficient mutants previously assigned to complementation group G22 of a collection of yeast pet mutants. To determine its location, Cox16p was tagged with a Myc epitope at the C terminus.

Note: This product is for in vitro research use only