

IL10RA Antibody

Catalog No: #35598

Orders: order@signalwayantibody.comSupport: tech@signalwayantibody.com

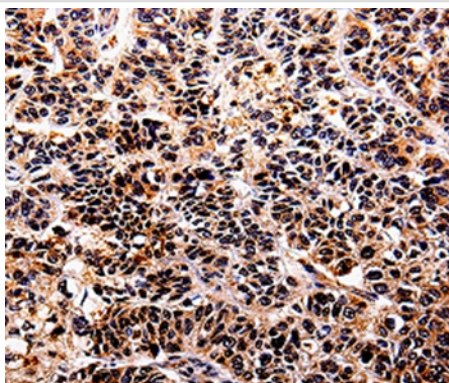
Description

Product Name	IL10RA Antibody
Host Species	Rabbit
Clonality	Polyclonal
Purification	Antigen affinity purification.
Applications	IHC
Species Reactivity	Hu
Specificity	The antibody detects endogenous levels of total IL10RA protein.
Immunogen Type	Recombinant Protein
Immunogen Description	Fusion protein corresponding to a region derived from internal residues of human Interleukin-10 receptor subunit alpha
Target Name	IL10RA
Other Names	CD210; IL10R; CD210a; CDW210A; HIL-10R; IL-10R1
Accession No.	Swiss-Prot#: Q13651NCBI Gene ID: 3587Gene Accssion: BC028082
Uniprot	Q13651
GeneID	3587;
Concentration	0.6mg/ml
Formulation	Rabbit IgG in pH7.4 PBS, 0.05% NaN ₃ , 40% Glycerol.
Storage	Store at -20°C

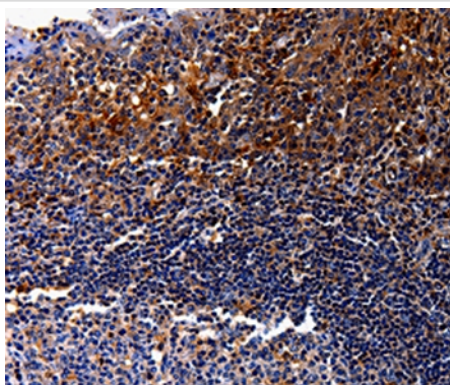
Application Details

Immunohistochemistry: 1:25-1:100

Images



Immunohistochemical analysis of paraffin-embedded Human tonsil cancer tissue using #35598 at dilution 1/30.



Immunohistochemical analysis of paraffin-embedded Human lung cancer tissue using #35598 at dilution 1/30.

Background

The protein encoded by this gene is a receptor for interleukin 10. This protein is structurally related to interferon receptors. It has been shown to mediate the immunosuppressive signal of interleukin 10, and thus inhibits the synthesis of proinflammatory cytokines. This receptor is reported to promote survival of progenitor myeloid cells through the insulin receptor substrate-2/PI 3-kinase/AKT pathway. Activation of this receptor leads to tyrosine phosphorylation of JAK1 and TYK2 kinases. Two transcript variants, one protein-coding and the other not protein-coding, have been found for this gene.

Note: This product is for in vitro research use only