

## IL1R1 Antibody

Catalog No: #35604

Orders: [order@signalwayantibody.com](mailto:order@signalwayantibody.com)Support: [tech@signalwayantibody.com](mailto:tech@signalwayantibody.com)

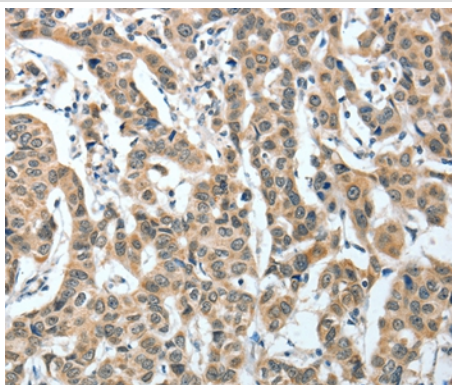
## Description

|                       |  |
|-----------------------|--|
| Product Name          | IL1R1 Antibody   |
| Host Species          | Rabbit   |
| Clonality             | Polyclonal   |
| Purification          | Antigen affinity purification.   |
| Applications          | IHC  |
| Species Reactivity    | Hu   |
| Specificity           | The antibody detects endogenous levels of total IL1R1 protein.                                       |
| Immunogen Type        | Recombinant Protein  |
| Immunogen Description | Fusion protein corresponding to residues near the C terminal of human interleukin 1 receptor, type I |
| Target Name           | IL1R1  |
| Other Names           | P80; IL1R; IL1RA; CD121A; D2S1473; IL-1R-alpha   |
| Accession No.         | Swiss-Prot#: P14778NCBI Gene ID: 3554Gene Accssion: BC067506   |
| Uniprot               | P14778   |
| GeneID                | 3554;  |
| Concentration         | 0.9mg/ml   |
| Formulation           | Rabbit IgG in pH7.4 PBS, 0.05% NaN <sub>3</sub> , 40% Glycerol.                                      |
| Storage               | Store at -20°C   |

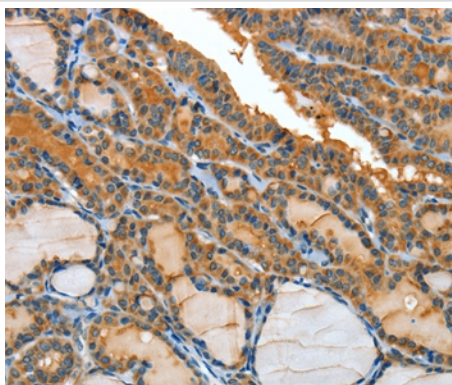
## Application Details

Immunohistochemistry: 1:25-1:100

## Images



Immunohistochemical analysis of paraffin-embedded Human breast cancer tissue using #35604 at dilution 1/25.



Immunohistochemical analysis of paraffin-embedded Human thyroid cancer tissue using #35604 at dilution 1/25.

## Background

The protein encoded by this gene is a cytokine receptor that belongs to the interleukin 1 receptor family. This protein is a receptor for interleukin alpha (IL1A), interleukin beta (IL1B), and interleukin 1 receptor, type I (IL1R1/IL1RA). It is an important mediator involved in many cytokine induced immune and inflammatory responses. This gene along with interleukin 1 receptor, type II (IL1R2), interleukin 1 receptor-like 2 (IL1RL2), and interleukin 1 receptor-like 1 (IL1RL1) form a cytokine receptor gene cluster in a region mapped to chromosome 2q12.

Note: This product is for in vitro research use only