

IL22RA1 Antibody

Catalog No: #35608

Orders: order@signalwayantibody.comSupport: tech@signalwayantibody.com

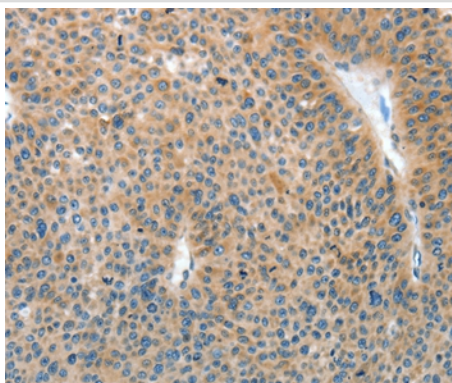
Description

Product Name	IL22RA1 Antibody
Host Species	Rabbit
Clonality	Polyclonal
Purification	Antigen affinity purification.
Applications	IHC
Species Reactivity	Hu
Specificity	The antibody detects endogenous levels of total IL22RA1 protein.
Immunogen Type	Recombinant Protein
Immunogen Description	Fusion protein corresponding to a region derived from internal residues of human interleukin 22 receptor, alpha 1
Target Name	IL22RA1
Other Names	IL22R; CRF2-9; IL22R1
Accession No.	Swiss-Prot#: Q8N6P7NCBI Gene ID: 58985Gene Accssion: BC029273
Uniprot	Q8N6P7
GeneID	58985;
Concentration	0.6mg/ml
Formulation	Rabbit IgG in pH7.4 PBS, 0.05% NaN ₃ , 40% Glycerol.
Storage	Store at -20°C

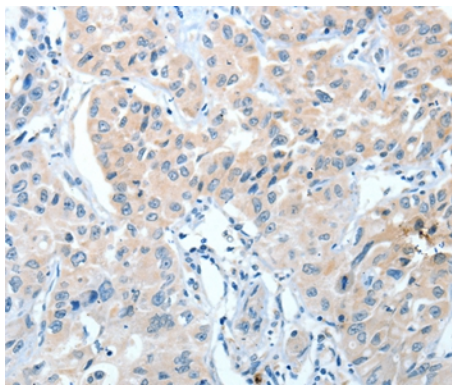
Application Details

Immunohistochemistry: 1:15-1:50

Images



Immunohistochemical analysis of paraffin-embedded Human liver cancer tissue using #35608 at dilution 1/15.



Immunohistochemical analysis of paraffin-embedded Human lung cancer tissue using #35608 at dilution 1/15.

Background

The protein encoded by this gene belongs to the class II cytokine receptor family, and has been shown to be a receptor for interleukin 22 (IL22). IL22 receptor is a protein complex that consists of this protein and interleukin 10 receptor, beta (IL10BR/CRFB4), a subunit also shared by the receptor complex for interleukin 10 (IL10). This gene and interleukin 28 receptor, alpha (IL28RA) form a cytokine receptor gene cluster in the chromosomal region 1p36.?

Note: This product is for in vitro research use only