

## AARS2 Antibody

Catalog No: #35611

Orders: [order@signalwayantibody.com](mailto:order@signalwayantibody.com)Support: [tech@signalwayantibody.com](mailto:tech@signalwayantibody.com)

## Description

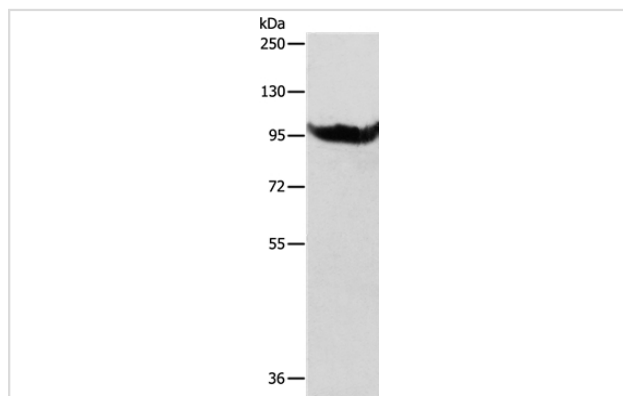
Product Name	AARS2 Antibody
Host Species	Rabbit
Clonality	Polyclonal
Purification	Antigen affinity purification.
Applications	WB IHC ELISA
Species Reactivity	Hu Ms Rt
Specificity	The antibody detects endogenous levels of total AARS2 protein.
Immunogen Type	Recombinant Protein
Immunogen Description	Fusion protein corresponding to a region derived from internal residues of human Alanyl-tRNA synthetase 2, mitochondrial
Target Name	AARS2
Other Names	AARSL; COXPD8; MTALARS; MT-ALARS
Accession No.	Swiss-Prot#: Q5J TZ9NCBI Gene ID: 57505Gene Accssion: BC131728
Uniprot	Q5J TZ9
GeneID	57505;
SDS-PAGE MW	107kd
Concentration	1.3mg/ml
Formulation	Rabbit IgG in pH7.4 PBS, 0.05% NaN <sub>3</sub> , 40% Glycerol.
Storage	Store at -20°C

## Application Details

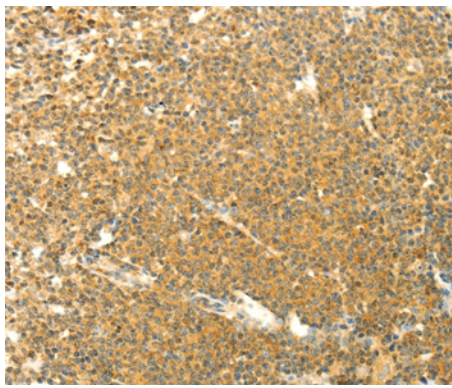
Western blotting: 1:500-1:2000

Immunohistochemistry: 1:50-1:200

## Images



Gel: 8%SDS-PAGE  
Lysate: 40ug SP20 cell  
Primary antibody: 1/600 dilution  
Secondary antibody dilution: 1/8000  
Exposure time: 15 seconds



Immunohistochemical analysis of paraffin-embedded Human lymphoma tissue using #35611 at dilution 1/40.

## Background

The protein encoded by this gene belongs to the class-II aminoacyl-tRNA synthetase family. Aminoacyl-tRNA synthetases play critical roles in mRNA translation by charging tRNAs with their cognate amino acids. The encoded protein is a mitochondrial enzyme that specifically aminoacylates alanyl-tRNA. Mutations in this gene are a cause of combined oxidative phosphorylation deficiency 8. Catalyzes the attachment of alanine to tRNA(Ala) in a two-step reaction: alanine is first activated by ATP to form Ala-AMP and then transferred to the acceptor end of tRNA(Ala). Also edits incorrectly charged tRNA(Ala) via its editing domain

Note: This product is for in vitro research use only