

KRT40 Antibody

Catalog No: #35629

Orders: order@signalwayantibody.comSupport: tech@signalwayantibody.com

Description

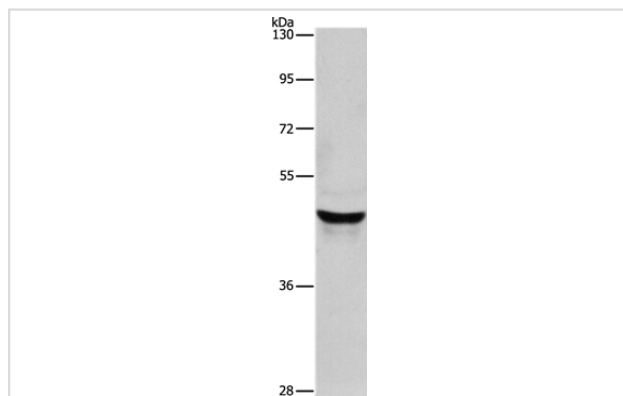
| | |
|-----------------------|---------------------------------------------------------------------------------------------|
| Product Name | KRT40 Antibody |
| Host Species | Rabbit |
| Clonality | Polyclonal |
| Purification | Antigen affinity purification. |
| Applications | WB IHC |
| Species Reactivity | Hu |
| Specificity | The antibody detects endogenous levels of total KRT40 protein. |
| Immunogen Type | Recombinant Protein |
| Immunogen Description | Fusion protein corresponding to a region derived from internal residues of human keratin 40 |
| Target Name | KRT40 |
| Other Names | K40; KA36; CK-40 |
| Accession No. | Swiss-Prot#: Q6A162NCBI Gene ID: 125115Gene Accssion: BC130396 |
| Uniprot | Q6A162 |
| GeneID | 125115; |
| SDS-PAGE MW | 48kd |
| Concentration | 1.9mg/ml |
| Formulation | Rabbit IgG in pH7.4 PBS, 0.05% NaN ₃ , 40% Glycerol. |
| Storage | Store at -20°C |

Application Details

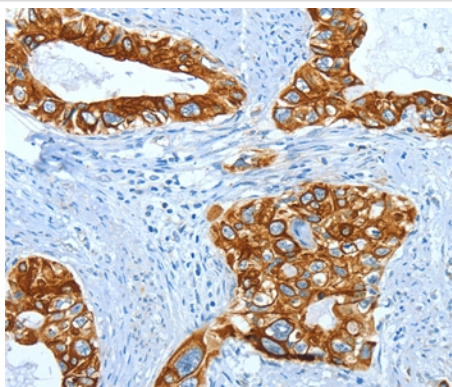
Western blotting: 1:500-1:2000

Immunohistochemistry: 1:50-1:200

Images



Gel: 8%SDS-PAGE
Lysate: 40ug Lovo cell
Primary antibody: 1/950 dilution
Secondary antibody dilution: 1/8000
Exposure time: 10 seconds



Immunohistochemical analysis of paraffin-embedded Human cervical cancer tissue using #35629 at dilution 1/50.

Background

This gene encodes a member of the type I (acidic) keratin family, which belongs to the superfamily of intermediate filament (IF) proteins. Keratins are heteropolymeric structural proteins which form the intermediate filament. These filaments, along with actin microfilaments and microtubules, compose the cytoskeleton of epithelial cells. The type I keratin genes are clustered in a region of chromosome 17q12-q21.?

Note: This product is for in vitro research use only