

KRT31 Antibody

Catalog No: #35631

Orders: order@signalwayantibody.comSupport: tech@signalwayantibody.com

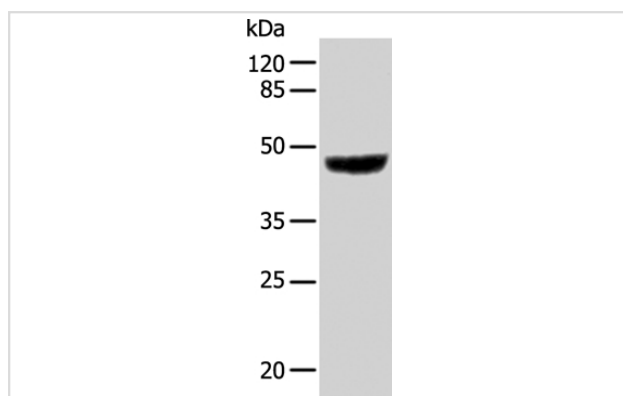
Description

Product Name	KRT31 Antibody
Host Species	Rabbit
Clonality	Polyclonal
Purification	Antigen affinity purification.
Applications	WB
Species Reactivity	Hu
Specificity	The antibody detects endogenous levels of total KRT31 protein.
Immunogen Type	Recombinant Protein
Immunogen Description	Fusion protein corresponding to a region derived from internal residues of human Keratin-31
Target Name	KRT31
Other Names	HA1; Ha-1; hHa1; KRTHA1
Accession No.	Swiss-Prot#: Q15323NCBI Gene ID: 3881Gene Accssion: BC114468
Uniprot	Q15323
GeneID	3881;
SDS-PAGE MW	47kd
Concentration	1.4mg/ml
Formulation	Rabbit IgG in pH7.4 PBS, 0.05% NaN ₃ , 40% Glycerol.
Storage	Store at -20°C

Application Details

Western blotting: 1:500-1:2000

Images



Gel: 10%SDS-PAGE
 Lysate: 30ug A549 cell
 Primary antibody: 1/500 dilution
 Secondary antibody dilution: 1/8000
 Exposure time: 10 seconds

Background

The protein encoded by this gene is a member of the keratin gene family. As a type I hair keratin, it is an acidic protein which heterodimerizes with type II keratins to form hair and nails. The type I hair keratins are clustered in a region of chromosome 17q12-q21 and have the same direction of

transcription.

Note: This product is for in vitro research use only