

FSCN1 Antibody

Catalog No: #35636

Orders: order@signalwayantibody.comSupport: tech@signalwayantibody.com

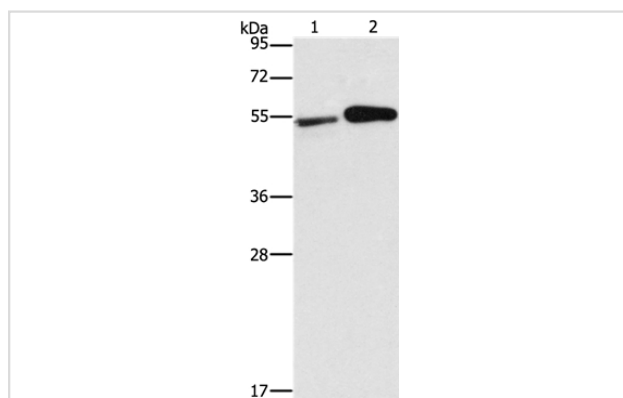
Description

Product Name	FSCN1 Antibody
Host Species	Rabbit
Clonality	Polyclonal
Purification	Antigen affinity purification.
Applications	WB
Species Reactivity	Hu
Specificity	The antibody detects endogenous levels of total FSCN1 protein.
Immunogen Type	Recombinant Protein
Immunogen Description	Fusion protein corresponding to residues near the N terminal of human fascin homolog 1, actin-bundling protein (<i>Strongylocentrotus purpuratus</i>)
Target Name	FSCN1
Other Names	HSN; SNL; p55; FAN1
Accession No.	Swiss-Prot#: Q16658NCBI Gene ID: 6624Gene Accssion: BC000521
Uniprot	Q16658
GeneID	6624;
SDS-PAGE MW	55kd
Concentration	0.9mg/ml
Formulation	Rabbit IgG in pH7.4 PBS, 0.05% NaN ₃ , 40% Glycerol.
Storage	Store at -20°C

Application Details

Western blotting: 1:200-1:1000

Images



Gel: 10%SDS-PAGE

Lysates (from left to right): Raji and U937 cell

Amount of lysate: 40ug per lane

Primary antibody: 1/200 dilution

Secondary antibody dilution: 1/8000

Exposure time: 40 seconds

Background

This gene encodes a member of the fascin family of actin-binding proteins. Fascin proteins organize F-actin into parallel bundles, and are required for

the formation of actin-based cellular protrusions. The encoded protein plays a critical role in cell migration, motility, adhesion and cellular interactions. Expression of this gene is known to be regulated by several microRNAs, and overexpression of this gene may play a role in the metastasis of multiple types of cancer by increasing cell motility

Note: This product is for in vitro research use only