

BTG3 Antibody

Catalog No: #35655



Orders: order@signalwayantibody.com
Support: tech@signalwayantibody.com

Description

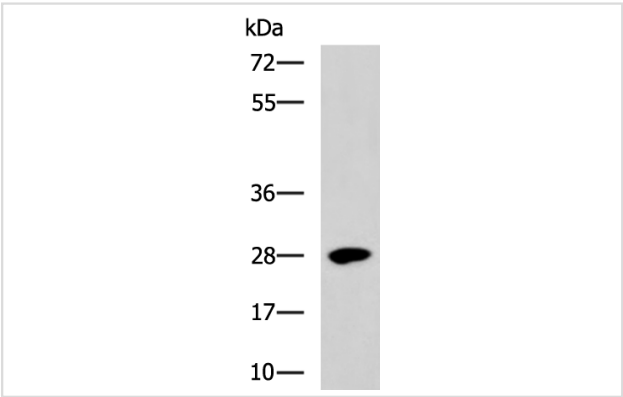
Product Name	BTG3 Antibody
Host Species	Rabbit
Clonality	Polyclonal
Purification	Antigen affinity purification.
Applications	WB IHC
Species Reactivity	Hu Ms
Specificity	The antibody detects endogenous levels of total BTG3 protein.
Immunogen Type	Recombinant Protein
Immunogen Description	Fusion protein of human BTG3
Target Name	BTG3
Other Names	ANA; TOB5; TOFA; APRO4; TOB55; ANA/BTG3
Accession No.	Swiss-Prot#: Q14201NCBI Gene ID: 10950Gene Accssion: BC011957
Uniprot	Q14201
GeneID	10950;
SDS-PAGE MW	29kd
Concentration	1mg/ml
Formulation	Rabbit IgG in pH7.4 PBS, 0.05% NaN3, 40% Glycerol.
Storage	Store at -20°C

Application Details

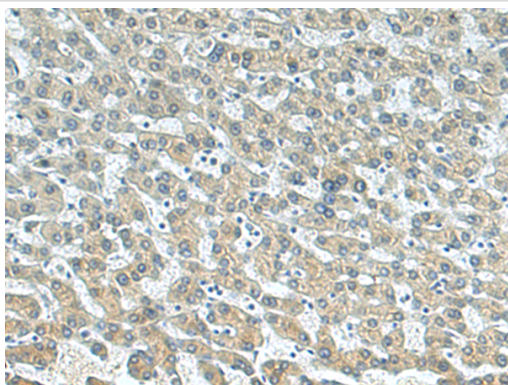
Western blotting: 1:1000-1:5000

Immunohistochemistry: 1:100-1:200

Images



Gel: 8%SDS-PAGE
Lysate: 40 μ g
Lane: Mouse testis tissue lysate
Primary antibody: BTG3 Antibody at dilution 1/1000
Secondary antibody: Goat anti rabbit IgG at 1/5000 dilution
Exposure time: 2 minutes



The image is immunohistochemistry of paraffin-embedded human liver cancer tissue using BTG3 Antibo) at dilution 1/140. (Original magnification: $\times 200$)

Background

The protein encoded by this gene is a member of the BTG/Tob family. This family has structurally related proteins that appear to have antiproliferative properties. This encoded protein might play a role in neurogenesis in the central nervous system. Two transcript variants encoding different isoforms have been found for this gene. Overexpression impairs serum-induced cell cycle progression from the G0/G1 to S phase.

Note: This product is for in vitro research use only