

CAMK2B Antibody

Catalog No: #35659

Orders: order@signalwayantibody.comSupport: tech@signalwayantibody.com

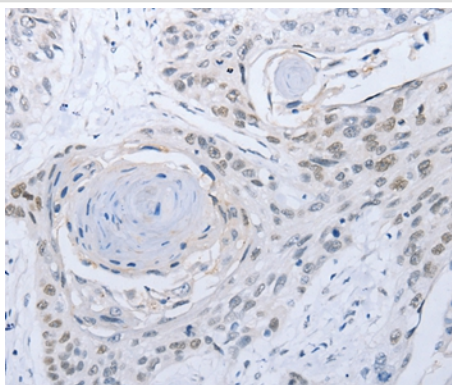
Description

Product Name	CAMK2B Antibody
Host Species	Rabbit
Clonality	Polyclonal
Purification	Antigen affinity purification.
Applications	IHC
Species Reactivity	Hu Ms Rt
Specificity	The antibody detects endogenous levels of total CAMK2B protein.
Immunogen Type	Recombinant Protein
Immunogen Description	Fusion protein corresponding to a region derived from internal residues of human Calcium/calmodulin-dependent protein kinase type II subunit beta
Target Name	CAMK2B
Other Names	CAM2; CAMK2; CAMKB
Accession No.	Swiss-Prot#: Q13554NCBI Gene ID: 816Gene Accssion: BC019070
Uniprot	Q13554
GeneID	816;
Concentration	0.6mg/ml
Formulation	Rabbit IgG in pH7.4 PBS, 0.05% NaN ₃ , 40% Glycerol.
Storage	Store at -20°C

Application Details

Immunohistochemistry: 1:10-1:25

Images



Immunohistochemical analysis of paraffin-embedded Human esophagus cancer tissue using #35659 at dilution 1/25.

Background

The product of this gene belongs to the serine/threonine protein kinase family and to the Ca(2+)/calmodulin-dependent protein kinase subfamily. Calcium signaling is crucial for several aspects of plasticity at glutamatergic synapses. In mammalian cells, the enzyme is composed of four different

chains: alpha, beta, gamma, and delta. The product of this gene is a beta chain. It is possible that distinct isoforms of this chain have different cellular localizations and interact differently with calmodulin. Eight transcript variants encoding eight distinct isoforms have been identified for this gene.

Note: This product is for in vitro research use only