

## CAMK1 Antibody

Catalog No: #35660

Orders: [order@signalwayantibody.com](mailto:order@signalwayantibody.com)Support: [tech@signalwayantibody.com](mailto:tech@signalwayantibody.com)

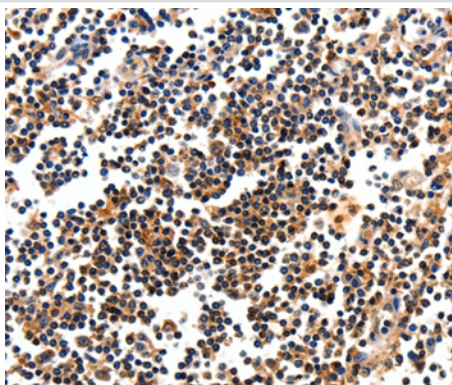
## Description

Product Name	CAMK1 Antibody
Host Species	Rabbit
Clonality	Polyclonal
Purification	Antigen affinity purification.
Applications	IHC
Species Reactivity	Hu
Specificity	The antibody detects endogenous levels of total CAMK1 protein.
Immunogen Type	Recombinant Protein
Immunogen Description	Fusion protein corresponding to a region derived from internal residues of human calcium/calmodulin-dependent protein kinase I
Target Name	CAMK1
Other Names	CAMKI
Accession No.	Swiss-Prot#: Q14012NCBI Gene ID: 8536Gene Accssion: BC106755
Uniprot	Q14012
GeneID	8536;
Concentration	0.4mg/ml
Formulation	Rabbit IgG in pH7.4 PBS, 0.05% NaN <sub>3</sub> , 40% Glycerol.
Storage	Store at -20°C

## Application Details

Immunohistochemistry: 1:10-1:50

## Images



Immunohistochemical analysis of paraffin-embedded Human tonsil tissue using #35660 at dilution 1/10.

## Background

Calcium/calmodulin-dependent protein kinase I is expressed in many tissues and is a component of a calmodulin-dependent protein kinase cascade. Calcium/calmodulin directly activates calcium/calmodulin-dependent protein kinase I by binding to the enzyme and indirectly promotes the

phosphorylation and synergistic activation of the enzyme by calcium/calmodulin-dependent protein kinase I kinase.

---

Note: This product is for in vitro research use only