

## CTSB Antibody

Catalog No: #35665

Orders: [order@signalwayantibody.com](mailto:order@signalwayantibody.com)Support: [tech@signalwayantibody.com](mailto:tech@signalwayantibody.com)

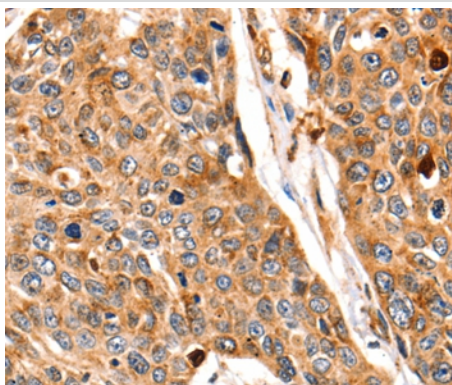
## Description

Product Name	CTSB Antibody
Host Species	Rabbit
Clonality	Polyclonal
Purification	Antigen affinity purification.
Applications	IHC
Species Reactivity	Hu
Specificity	The antibody detects endogenous levels of total CTSB protein.
Immunogen Type	Recombinant Protein
Immunogen Description	Fusion protein corresponding to a region derived from internal residues of human cathepsin B
Target Name	CTSB
Other Names	APPS; CPSB
Accession No.	Swiss-Prot#: P07858NCBI Gene ID: 1508Gene Accssion: BC010240
Uniprot	P07858
GeneID	1508;
Concentration	2.8mg/ml
Formulation	Rabbit IgG in pH7.4 PBS, 0.05% NaN <sub>3</sub> , 40% Glycerol.
Storage	Store at -20°C

## Application Details

Immunohistochemistry: 1:150-1:500

## Images



Immunohistochemical analysis of paraffin-embedded Human esophagus cancer tissue using #35665 at dilution 1/140.

## Background

The protein encoded by this gene is a lysosomal cysteine proteinase composed of a dimer of disulfide-linked heavy and light chains, both produced from a single protein precursor. It is also known as amyloid precursor protein secretase and is involved in the proteolytic processing of amyloid precursor protein (APP). Incomplete proteolytic processing of APP has been suggested to be a causative factor in Alzheimer disease, the most common cause of dementia. Overexpression of the encoded protein, which is a member of the peptidase C1 family, has been associated with

esophageal adenocarcinoma and other tumors. At least five transcript variants encoding the same protein have been found for this gene.

---

Note: This product is for in vitro research use only