

MAN1B1 antibody

Catalog No: #22044



Orders: order@signalwayantibody.com
Support: tech@signalwayantibody.com

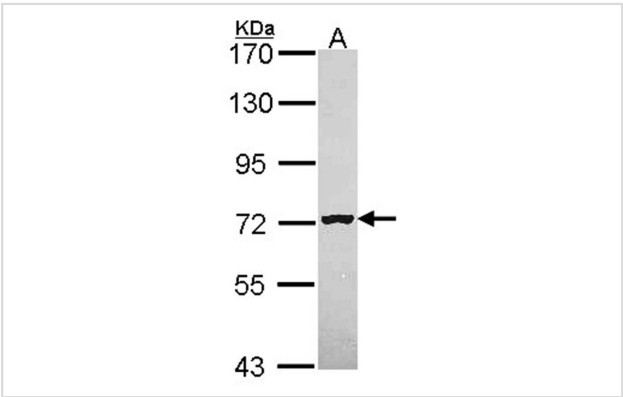
Description

Product Name	MAN1B1 antibody
Host Species	Rabbit
Clonality	Polyclonal
Purification	Purified by antigen-affinity chromatography.
Applications	WB IHC
Species Reactivity	Hu
Immunogen Type	Recombinant protein
Immunogen Description	Recombinant protein fragment contain a sequence corresponding to a region within amino acids 414 and 670 of MAN1B1
Target Name	MAN1B1
Other Names	MANA-ER
Accession No.	Swiss-Prot:Q9UKM7Gene ID:11253
Uniprot	Q9UKM7
GeneID	11253;
Concentration	0.8mg/ml
Formulation	Supplied in 0.1M Tris-buffered saline with 10% Glycerol (pH7.0). 0.01% Thimerosal was added as a preservative.
Storage	Store at -20°C for long term preservation (recommended). Store at 4°C for short term use.

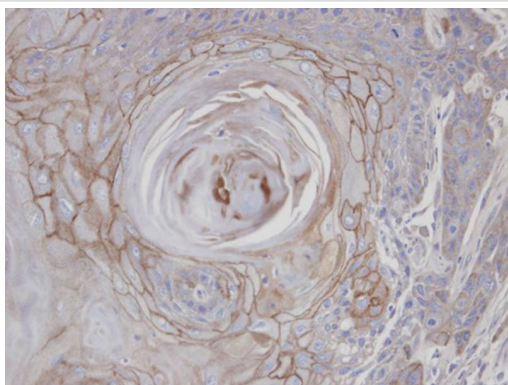
Application Details

Predicted MW: 80kd
Western blotting: 1:500-1:3000
Immunohistochemistry: 1:100-1:250

Images



Sample (30 ug of whole cell lysate)
A: Hela
7.5% SDS PAGE
MAN1B1 antibody diluted at 1: 1000



Immunohistochemical analysis of paraffin-embedded SCC25 xenograft, using MAN1B1 antibody at 1: 100 dilution.

Note: This product is for in vitro research use only