

CTSV Antibody

Catalog No: #35669



Orders: order@signalwayantibody.com
Support: tech@signalwayantibody.com

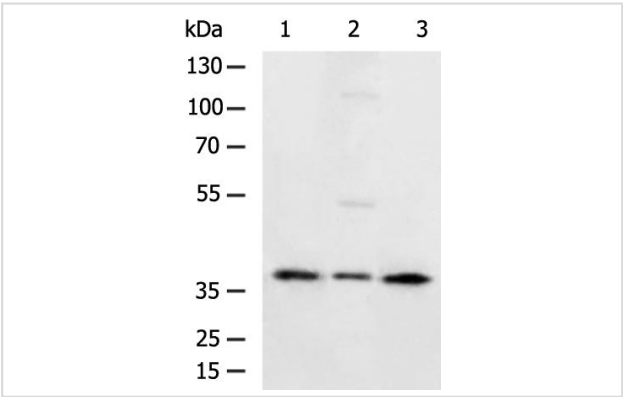
Description

Product Name	CTSV Antibody
Host Species	Rabbit
Clonality	Polyclonal
Purification	Antigen affinity purification.
Applications	WB IHC
Species Reactivity	Hu Ms
Specificity	The antibody detects endogenous levels of total CTSV protein.
Immunogen Type	Recombinant Protein
Immunogen Description	Fusion protein corresponding to a region derived from internal residues of human cathepsin L2
Target Name	CTSV
Other Names	CTSU; CTSV; CATL2
Accession No.	Swiss-Prot#: O60911NCBI Gene ID: 1515Gene Accssion: BC110512
Uniprot	O60911
GeneID	1515;
SDS-PAGE MW	38kd
Concentration	0.6 mg/ml
Formulation	Rabbit IgG in pH7.4 PBS, 0.05% NaN3, 40% Glycerol.
Storage	Store at -20°C

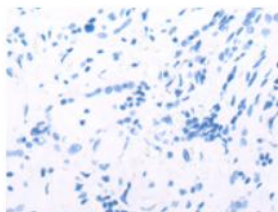
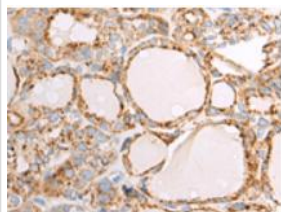
Application Details

WB 1:1000-1:5000;
IHC 1:50-1:200

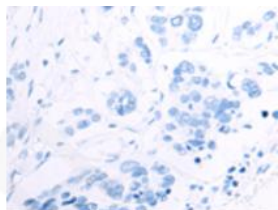
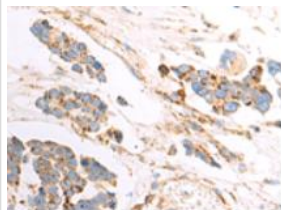
Images



Gel: 8%SDS-PAGE
Lysate: 10 ug
Lane 1-3: Jurkat cell, A549 cell, Human placenta tissue
lysates
Primary antibody: at dilution 1/1000
Secondary antibody: at 1/20000 dilution
Exposure time: 10 seconds (Detected by Chemiluminescence
Imager)



The image on the left is immunohistochemistry of paraffinembedded Human thyroid cancer tissue using CTSV Antibody at dilution 1/50, on the right is treated with fusion protein. (Original magnification: 200)



The image on the left is immunohistochemistry of paraffinembedded Human colorectal cancer tissue using CTSV Antibody at dilution 1/50, on the right is treated with fusion protein. (Original magnification: 200)

Background

The protein encoded by this gene, a member of the peptidase C1 family, is a lysosomal cysteine proteinase that may play an important role in corneal physiology. This gene is expressed in colorectal and breast carcinomas but not in normal colon, mammary gland, or peritumoral tissues, suggesting a possible role for this gene in tumor processes. Alternatively spliced variants, encoding the same protein, have been identified.

Note: This product is for in vitro research use only