

CCL21 Antibody

Catalog No: #35670

Orders: order@signalwayantibody.comSupport: tech@signalwayantibody.com

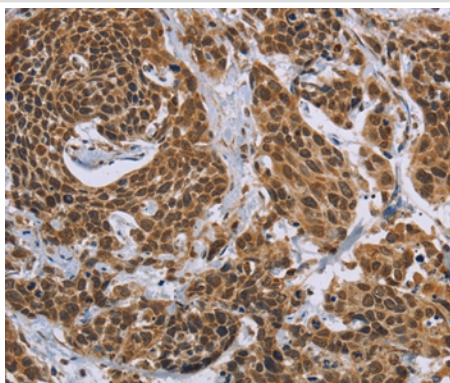
Description

Product Name	CCL21 Antibody
Host Species	Rabbit
Clonality	Polyclonal
Purification	Antigen affinity purification.
Applications	IHC
Species Reactivity	Hu
Specificity	The antibody detects endogenous levels of total CCL21 protein.
Immunogen Type	Recombinant Protein
Immunogen Description	Fusion protein corresponding to a region derived from internal residues of human chemokine (C-C motif) ligand 21
Target Name	CCL21
Other Names	ECL; SLC; CKb9; TCA4; 6Ckine; SCYA21
Accession No.	Swiss-Prot#: O00585NCBI Gene ID: 6366Gene Accssion: BC027918
Uniprot	O00585
GeneID	6366;
Concentration	1.6mg/ml
Formulation	Rabbit IgG in pH7.4 PBS, 0.05% NaN ₃ , 40% Glycerol.
Storage	Store at -20°C

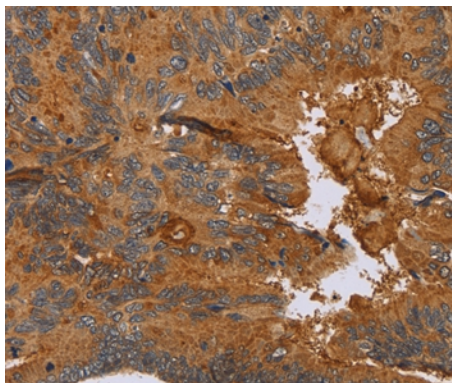
Application Details

Immunohistochemistry: 1:50-1:200

Images



Immunohistochemical analysis of paraffin-embedded Human cervical cancer tissue using #35670 at dilution 1/40.



Immunohistochemical analysis of paraffin-embedded Human colon cancer tissue using #35670 at dilution 1/40.

Background

This gene is one of several CC cytokine genes clustered on the p-arm of chromosome 9. Cytokines are a family of secreted proteins involved in immunoregulatory and inflammatory processes. The CC cytokines are proteins characterized by two adjacent cysteines. Similar to other chemokines the protein encoded by this gene inhibits hemopoiesis and stimulates chemotaxis. This protein is chemotactic in vitro for thymocytes and activated T cells, but not for B cells, macrophages, or neutrophils. The cytokine encoded by this gene may also play a role in mediating homing of lymphocytes to secondary lymphoid organs. It is a high affinity functional ligand for chemokine receptor 7 that is expressed on T and B lymphocytes and a known receptor for another member of the cytokine family (small inducible cytokine A19).

Note: This product is for in vitro research use only