

CDK2 Antibody

Catalog No: #35676



Orders: order@signalwayantibody.com
Support: tech@signalwayantibody.com

Description

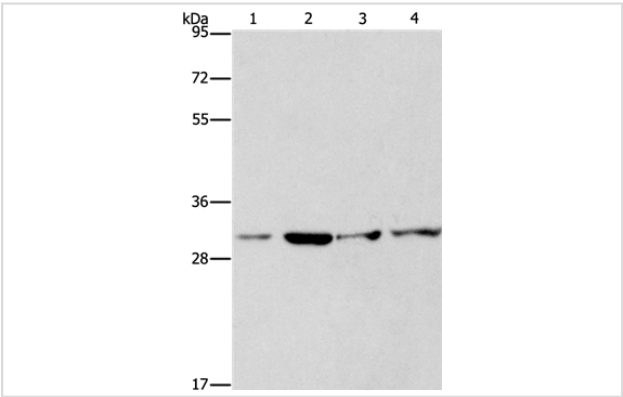
Product Name	CDK2 Antibody
Host Species	Rabbit
Clonality	Polyclonal
Purification	Antigen affinity purification.
Applications	WB IHC
Species Reactivity	Hu
Specificity	The antibody detects endogenous levels of total CDK2 protein.
Immunogen Type	Recombinant Protein
Immunogen Description	Full length fusion protein
Target Name	CDK2
Other Names	p33(CDK2)
Accession No.	Swiss-Prot#: P24941NCBI Gene ID: 1017Gene Accssion: BC003065
Uniprot	P24941
GeneID	1017;
SDS-PAGE MW	34kd
Concentration	1mg/ml
Formulation	Rabbit IgG in pH7.4 PBS, 0.05% NaN3, 40% Glycerol.
Storage	Store at -20°C

Application Details

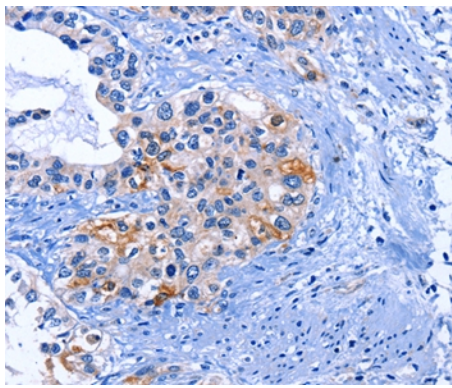
Western blotting: 1:200-1:1000

Immunohistochemistry: 1:15-1:50

Images



Gel: 8%SDS-PAGE
Lysates (from left to right): A431 and 231 cell, hela cell and human fetal liver tissue
Amount of lysate: 40ug per lane
Primary antibody: 1/250 dilution
Secondary antibody dilution: 1/8000
Exposure time: 1 minute



Immunohistochemical analysis of paraffin-embedded Human cervical cancer tissue using #35676 at dilution 1/25.

Background

The protein encoded by this gene is a member of the Ser/Thr protein kinase family. This protein kinase is highly similar to the gene products of *S. cerevisiae cdc28*, and *S. pombe cdc2*. It is a catalytic subunit of the cyclin-dependent protein kinase complex, whose activity is restricted to the G1-S phase, and essential for cell cycle G1/S phase transition. This protein associates with and regulated by the regulatory subunits of the complex including cyclin A or E, CDK inhibitor p21Cip1 (CDKN1A) and p27Kip1 (CDKN1B). Its activity is also regulated by its protein phosphorylation. Two alternatively spliced variants and multiple transcription initiation sites of this gene have been reported.

Note: This product is for in vitro research use only