

CEACAM21 Antibody

Catalog No: #35679

Orders: order@signalwayantibody.comSupport: tech@signalwayantibody.com

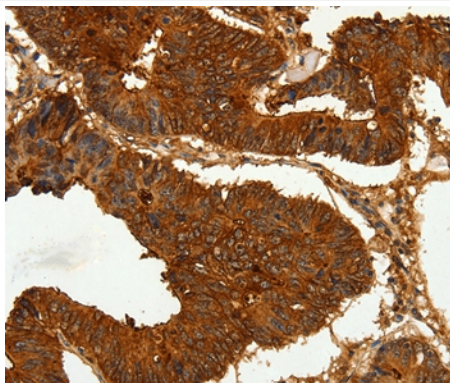
Description

Product Name	CEACAM21 Antibody
Host Species	Rabbit
Clonality	Polyclonal
Purification	Antigen affinity purification.
Applications	IHC
Species Reactivity	Hu
Specificity	The antibody detects endogenous levels of total CEACAM21 protein.
Immunogen Type	Recombinant Protein
Immunogen Description	Fusion protein corresponding to a region derived from internal residues of human carcinoembryonic antigen-related cell adhesion molecule 21
Target Name	CEACAM21
Other Names	CEACAM3; R29124_1
Accession No.	Swiss-Prot#: Q3KPI0NCBI Gene ID: 90273Gene Accssion: BC012001
Uniprot	Q3KPI0
GeneID	90273;
Concentration	1.6mg/ml
Formulation	Rabbit IgG in pH7.4 PBS, 0.05% NaN ₃ , 40% Glycerol.
Storage	Store at -20°C

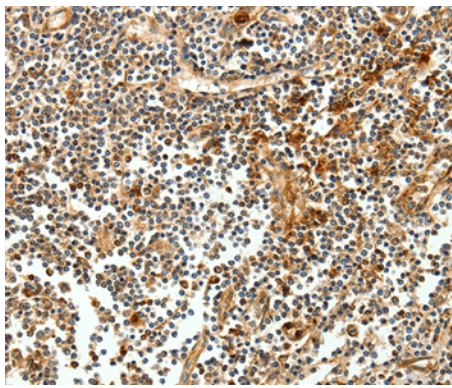
Application Details

Immunohistochemistry: 1:50-1:200

Images



Immunohistochemical analysis of paraffin-embedded Human colon cancer tissue using #35679 at dilution 1/60.



Immunohistochemical analysis of paraffin-embedded Human tonsil cancer tissue using #35679 at dilution 1/60.

Background

CEACAM21 is a gene which encodes carcinoembryonic antigen. It belongs to the immunoglobulin superfamily-CEA family. Three isoforms of the human protein are produced by alternative splicing. High levels of expression in hematopoietic system, brain and muscle.

Note: This product is for in vitro research use only