

COL2A1 Antibody

Catalog No: #35690



Orders: order@signalwayantibody.com
Support: tech@signalwayantibody.com

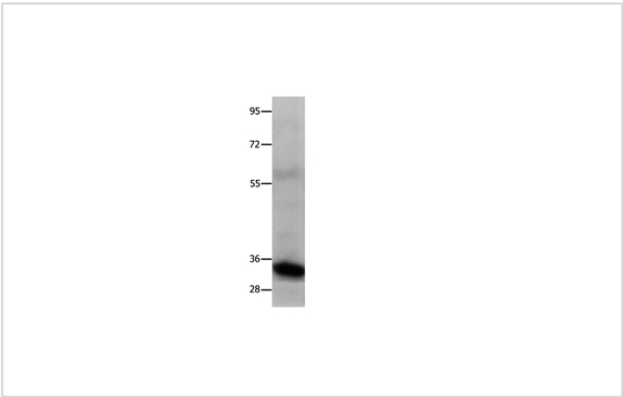
Description

Product Name	COL2A1 Antibody
Host Species	Rabbit
Clonality	Polyclonal
Purification	Antigen affinity purification.
Applications	WB IHC
Species Reactivity	Hu
Specificity	The antibody detects endogenous levels of total COL2A1 protein.
Immunogen Type	Recombinant Protein
Immunogen Description	Full length fusion protein
Target Name	COL2A1
Other Names	AOM; ANFH; SEDC; COL11A3
Accession No.	Swiss-Prot#: P02458NCBI Gene ID: 1280Gene Accssion: BC007252
Uniprot	P02458
GeneID	1280;
SDS-PAGE MW	30kd
Concentration	0.4mg/ml
Formulation	Rabbit IgG in pH7.4 PBS, 0.05% NaN3, 40% Glycerol.
Storage	Store at -20°C

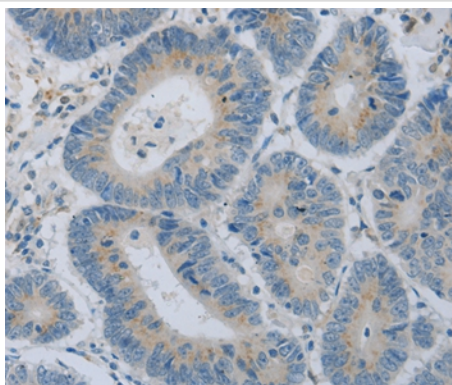
Application Details

Western blotting: 1:200-1:1000
Immunohistochemistry: 1:15-1:50

Images



Gel: 10%SDS-PAGE
Lysate: 30ug 293T cell
Primary antibody: 1/200 dilution
Secondary antibody dilution: 1/8000
Exposure time: 10 seconds



Immunohistochemical analysis of paraffin-embedded Human colon cancer tissue using #35690 at dilution 1/15.

Background

This gene encodes the alpha-1 chain of type II collagen, a fibrillar collagen found in cartilage and the vitreous humor of the eye. Mutations in this gene are associated with achondrogenesis, chondrodysplasia, early onset familial osteoarthritis, SED congenita, Langer-Saldino achondrogenesis, Kniest dysplasia, Stickler syndrome type I, and spondyloepimetaphyseal dysplasia Strudwick type. In addition, defects in processing chondrocalcin, a calcium binding protein that is the C-propeptide of this collagen molecule, are also associated with chondrodysplasia. There are two transcripts identified for this gene.

Note: This product is for in vitro research use only