

ECE2 Antibody

Catalog No: #35719

Orders: order@signalwayantibody.comSupport: tech@signalwayantibody.com

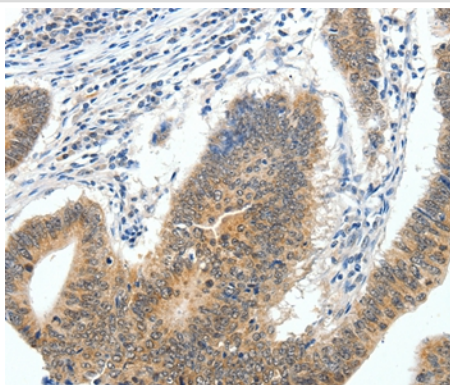
Description

Product Name	ECE2 Antibody
Host Species	Rabbit
Clonality	Polyclonal
Purification	Antigen affinity purification.
Applications	IHC
Species Reactivity	Hu
Specificity	The antibody detects endogenous levels of total ECE2 protein.
Immunogen Type	Recombinant Protein
Immunogen Description	Fusion protein corresponding to a region derived from internal residues of human endothelin converting enzyme 2
Target Name	ECE2
Other Names	endothelin converting enzyme 2;Methyltransferase-like region
Accession No.	Swiss-Prot#: O60344NCBI Gene ID: 9718Gene Accssion: BC005835
Uniprot	O60344
GeneID	9718;
Concentration	1mg/ml
Formulation	Rabbit IgG in pH7.4 PBS, 0.05% NaN ₃ , 40% Glycerol.
Storage	Store at -20°C

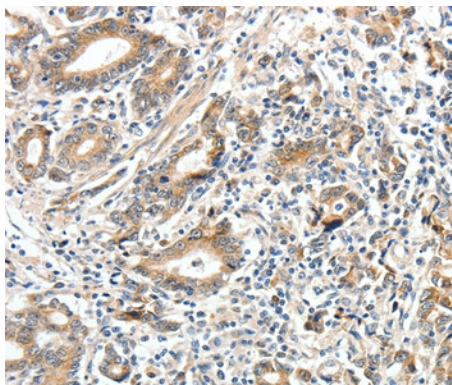
Application Details

Immunohistochemistry: 1:50-1:200

Images



Immunohistochemical analysis of paraffin-embedded Human colon cancer tissue using #35719 at dilution 1/40.



Immunohistochemical analysis of paraffin-embedded Human gastric cancer tissue using #35719 at dilution 1/40.

Background

Endothelin-converting enzymes, such as ECE2 (EC 3.4.24.71), are type II metalloproteases that generate functionally pleiotropic members of the endothelin vasoactive peptide family. It converts big endothelin-1 to endothelin-1. Also involved in the processing of various neuroendocrine peptides, including neurotensin, angiotensin I, substance P, proenkephalin-derived peptides, and prodynorphin-derived peptides. May limit beta-amyloid peptide accumulation in brain. May also have methyltransferase activity.

Note: This product is for in vitro research use only