

## EGFL6 Antibody

Catalog No: #35722

Orders: [order@signalwayantibody.com](mailto:order@signalwayantibody.com)Support: [tech@signalwayantibody.com](mailto:tech@signalwayantibody.com)

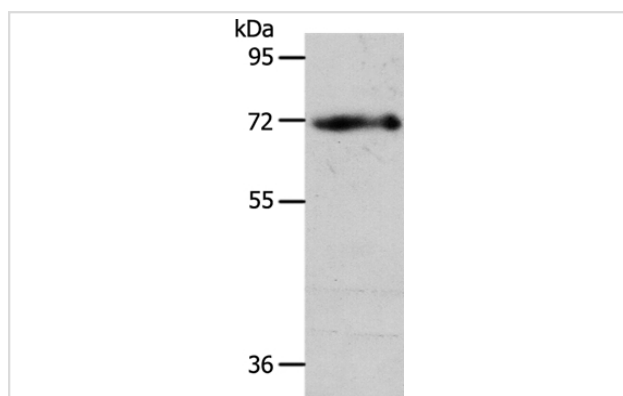
## Description

Product Name	EGFL6 Antibody
Host Species	Rabbit
Clonality	Polyclonal
Purification	Antigen affinity purification.
Applications	WB
Species Reactivity	Hu
Specificity	The antibody detects endogenous levels of total EGFL6 protein.
Immunogen Type	Recombinant Protein
Immunogen Description	Fusion protein corresponding to residues near the C terminal of human EGF-like-domain, multiple 6
Target Name	EGFL6
Other Names	W80; MAEG
Accession No.	Swiss-Prot#: Q8IUX8NCBI Gene ID: 25975Gene Accssion: BC038587
Uniprot	Q8IUX8
GeneID	25975;
SDS-PAGE MW	61kd
Concentration	0.9mg/ml
Formulation	Rabbit IgG in pH7.4 PBS, 0.05% NaN <sub>3</sub> , 40% Glycerol.
Storage	Store at -20°C

## Application Details

Western blotting: 1:200-1:1000

## Images



Gel: 10%SDS-PAGE  
 Lysates (from left to right): Human fetal brain tissue  
 Amount of lysate: 40ug per lane  
 Primary antibody: 1/450 dilution  
 Secondary antibody dilution: 1/8000  
 Exposure time: 20 seconds

## Background

This gene encodes a member of the epidermal growth factor (EGF) repeat superfamily. Members of this superfamily are characterized by the presence of EGF-like repeats and are often involved in the regulation of cell cycle, proliferation, and developmental processes. The gene product

contains a signal peptide, suggesting that it is secreted; an EGF repeat region consisting of 4 complete EGF-like repeats and 1 partial EGF-like repeat, 3 of which have a calcium-binding consensus sequence; an arg-gly-asp integrin association motif; and a MAM domain, which is believed to have an adhesive function. This gene is expressed early during development, and its expression has been detected in lung and meningioma tumors.

---

Note: This product is for in vitro research use only