

## ENPP6 Antibody

Catalog No: #35726

Orders: [order@signalwayantibody.com](mailto:order@signalwayantibody.com)Support: [tech@signalwayantibody.com](mailto:tech@signalwayantibody.com)

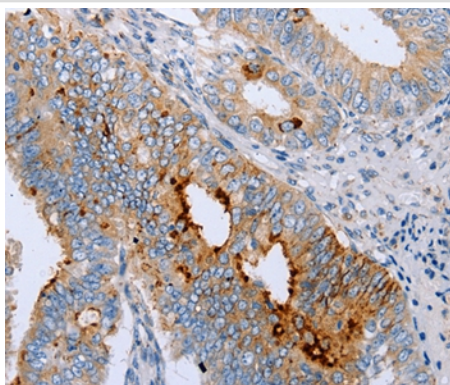
## Description

Product Name	ENPP6 Antibody
Host Species	Rabbit
Clonality	Polyclonal
Purification	Antigen affinity purification.
Applications	IHC
Species Reactivity	Hu
Specificity	The antibody detects endogenous levels of total ENPP6 protein.
Immunogen Type	Recombinant Protein
Immunogen Description	Fusion protein corresponding to a region derived from internal residues of human ectonucleotide pyrophosphatase/phosphodiesterase 6
Target Name	ENPP6
Other Names	NPP6
Accession No.	Swiss-Prot#: Q6UWR7NCBI Gene ID: 133121Gene Accssion: BC035035
Uniprot	Q6UWR7
GeneID	133121;
Concentration	0.6mg/ml
Formulation	Rabbit IgG in pH7.4 PBS, 0.05% NaN <sub>3</sub> , 40% Glycerol.
Storage	Store at -20°C

## Application Details

Immunohistochemistry: 1:10-1:50

## Images



Immunohistochemical analysis of paraffin-embedded Human cervical cancer tissue using #35726 at dilution 1/15.

## Background

Choline-specific glycerophosphodiester phosphodiesterase. Hydrolyzes lysophosphatidylcholine (LPC) to form monoacylglycerol and phosphorylcholine but not lysophosphatidic acid, showing it has a lysophospholipase C activity. Has a preference for LPC with short (12:0 and 14:0) or

polyunsaturated (18:2 and 20:4) fatty acids. Also hydrolyzes glycerophosphorylcholine and sphingosylphosphorylcholine efficiently. Hydrolyzes the classical substrate for phospholipase C, p-nitrophenyl phosphorylcholine in vitro, while it does not hydrolyze the classical nucleotide phosphodiesterase substrate, p-nitrophenyl thymidine 5'-monophosphate. Does not hydrolyze diacyl phospholipids such as phosphatidylethanolamine, phosphatidylinositol, phosphatidylserine, phosphatidylglycerol and phosphatidic acid.

---

Note: This product is for in vitro research use only