

## FANCF Antibody

Catalog No: #35736

Orders: [order@signalwayantibody.com](mailto:order@signalwayantibody.com)Support: [tech@signalwayantibody.com](mailto:tech@signalwayantibody.com)

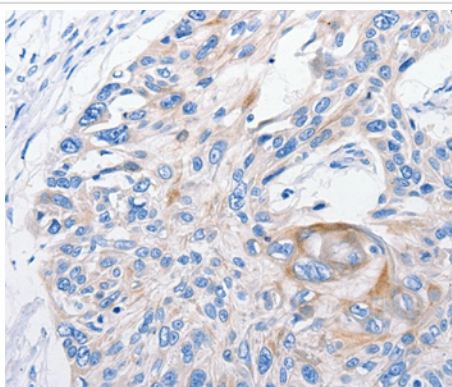
## Description

Product Name	FANCF Antibody
Host Species	Rabbit
Clonality	Polyclonal
Purification	Antigen affinity purification.
Applications	IHC
Species Reactivity	Hu
Specificity	The antibody detects endogenous levels of total FANCF protein.
Immunogen Type	Recombinant Protein
Immunogen Description	Full length fusion protein
Target Name	FANCF
Other Names	FAF
Accession No.	Swiss-Prot#: Q9NPI8NCBI Gene ID: 2188Gene Accssion: BC063038
Uniprot	Q9NPI8
GeneID	2188;
Concentration	2.2mg/ml
Formulation	Rabbit IgG in pH7.4 PBS, 0.05% NaN <sub>3</sub> , 40% Glycerol.
Storage	Store at -20°C

## Application Details

Immunohistochemistry: 1:50-1:100

## Images



Immunohistochemical analysis of paraffin-embedded Human esophagus cancer tissue using #35736 at dilution 1/100.

## Background

The Fanconi anemia complementation group (FANCF) currently includes FANCA, FANCB, FANCC, FANCD1 (also called BRCA2), FANCD2, FANCE, FANCF, FANCG, FANCI, FANCL (also called BRIP1), FANCL, FANCM and FANCN (also called PALB2). The previously defined group FANCF is the same as FANCA. Fanconi anemia is a genetically heterogeneous recessive disorder characterized by cytogenetic instability, hypersensitivity to DNA crosslinking agents, increased chromosomal breakage, and defective DNA repair. The members of the Fanconi anemia complementation group do not

share sequence similarity; they are related by their assembly into a common nuclear protein complex. This gene encodes the protein for complementation group F.

---

Note: This product is for in vitro research use only