

MPI antibody

Catalog No: #22051



Orders: order@signalwayantibody.com
Support: tech@signalwayantibody.com

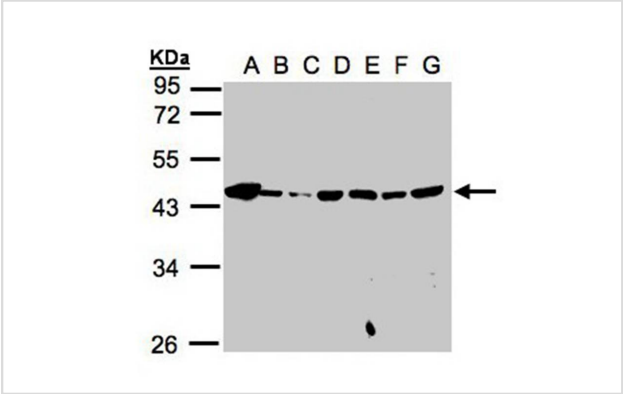
Description

Product Name	MPI antibody
Host Species	Rabbit
Clonality	Polyclonal
Purification	Purified by antigen-affinity chromatography.
Applications	WB IHC
Species Reactivity	Hu
Immunogen Type	Recombinant protein
Immunogen Description	Recombinant protein fragment contain a sequence corresponding to a region within amino acids 150 and 409 of Human MPI
Target Name	MPI
Accession No.	Swiss-Prot:P34949Gene ID:4351
Uniprot	P34949
GeneID	4351;
Concentration	1mg/ml
Formulation	Supplied in 0.1M Tris-buffered saline with 10% Glycerol (pH7.0). 0.01% Thimerosal was added as a preservative.
Storage	Store at -20°C for long term preservation (recommended). Store at 4°C for short term use.

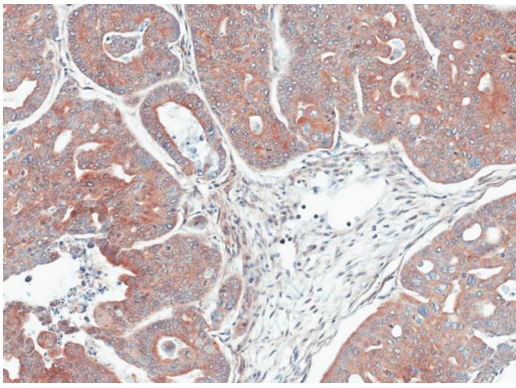
Application Details

Predicted MW: 47kd
Western blotting: 1:500-1:3000
Immunohistochemistry: 1:100-1:250

Images



Sample(30ug whole cell lysate)
A: 293T
B: A431
C: H1299
D: HeLa S3
E: Hep G2
F: MOLT4
G: Raji
10% SDS PAGE
Primary antibody diluted at 1: 1000



Immunohistochemical analysis of paraffin-embedded Gastric CA N87 xenograft, using MPI antibody at 1: 100 dilution.

Background

Phosphomannose isomerase catalyzes the interconversion of fructose-6-phosphate and mannose-6-phosphate and plays a critical role in maintaining the supply of D-mannose derivatives, which are required for most glycosylation reactions. Mutations in the MPI gene were found in patients with carbohydrate-deficient glycoprotein syndrome, type Ib. [provided by RefSeq]

Note: This product is for in vitro research use only