

## TBX22 Antibody

Catalog No: #35741

Orders: [order@signalwayantibody.com](mailto:order@signalwayantibody.com)Support: [tech@signalwayantibody.com](mailto:tech@signalwayantibody.com)

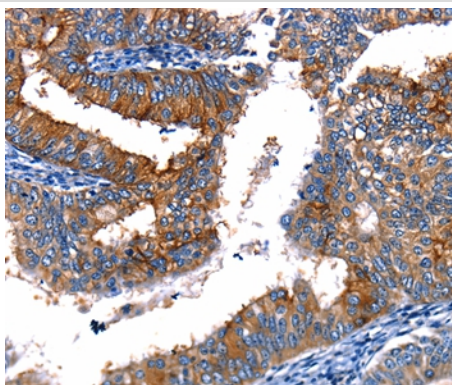
## Description

Product Name	TBX22 Antibody
Host Species	Rabbit
Clonality	Polyclonal
Purification	Antigen affinity purification.
Applications	IHC
Species Reactivity	Hu
Specificity	The antibody detects endogenous levels of total TBX22 protein.
Immunogen Type	Recombinant Protein
Immunogen Description	Fusion protein corresponding to residues near the C terminal of human T-box 22
Target Name	TBX22
Other Names	CPX; CLPA; TBXX; dJ795G23.1
Accession No.	Swiss-Prot#: Q9Y458NCBI Gene ID: 50945Gene Accssion: BC014194
Uniprot	Q9Y458
GeneID	50945;
Concentration	0.4mg/ml
Formulation	Rabbit IgG in pH7.4 PBS, 0.05% NaN <sub>3</sub> , 40% Glycerol.
Storage	Store at -20°C

## Application Details

Immunohistochemistry: 1:25-1:100

## Images



Immunohistochemical analysis of paraffin-embedded Human cervical cancer tissue using #35741 at dilution 1/15.

## Background

This gene is a member of a phylogenetically conserved family of genes that share a common DNA-binding domain, the T-box. T-box genes encode transcription factors involved in the regulation of developmental processes. Mutations in this gene have been associated with the inherited X-linked disorder, Cleft palate with ankyloglossia, and it is believed to play a major role in human palatogenesis. Alternatively spliced transcript variants encoding different isoforms have been found for this gene.

---

Note: This product is for in vitro research use only