

GNB1 Antibody

Catalog No: #35745



Orders: order@signalwayantibody.com
Support: tech@signalwayantibody.com

Description

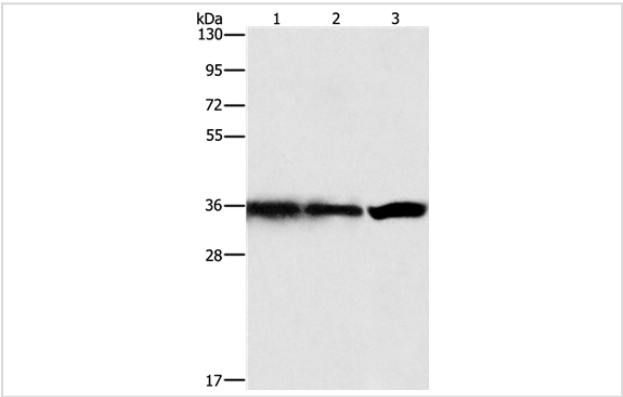
Product Name	GNB1 Antibody
Host Species	Rabbit
Clonality	Polyclonal
Purification	Antigen affinity purification.
Applications	WB IHC
Species Reactivity	Hu Ms Rt
Specificity	The antibody detects endogenous levels of total GNB1 protein.
Immunogen Type	Recombinant Protein
Immunogen Description	Full length fusion protein
Target Name	GNB1
Other Names	GBB1;G protein;GNB1;Transducin beta chain 1
Accession No.	Swiss-Prot#: P62873NCBI Gene ID: 2782Gene Accssion: BC004186
Uniprot	P62873
GeneID	2782;
SDS-PAGE MW	37kd
Concentration	0.9mg/ml
Formulation	Rabbit IgG in pH7.4 PBS, 0.05% NaN3, 40% Glycerol.
Storage	Store at -20°C

Application Details

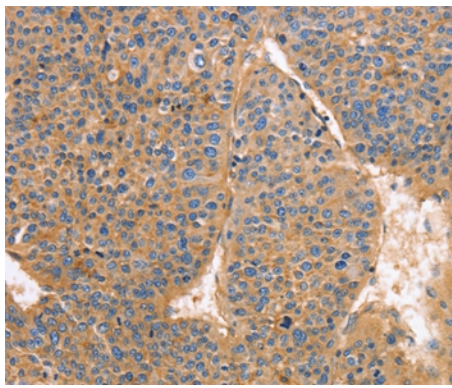
Western blotting: 1:500-1:2000

Immunohistochemistry: 1:25-1:100

Images



Gel: 15%SDS-PAGE
Lysates (from left to right): Hela, 293T and 231 cell
Amount of lysate: 40ug per lane
Primary antibody: 1/450 dilution
Secondary antibody dilution: 1/8000
Exposure time: 1 second



Immunohistochemical analysis of paraffin-embedded Human liver cancer tissue using #35745 at dilution 1/25.

Background

Heterotrimeric guanine nucleotide-binding proteins (G proteins), which integrate signals between receptors and effector proteins, are composed of an alpha, a beta, and a gamma subunit. These subunits are encoded by families of related genes. This gene encodes a beta subunit. Beta subunits are important regulators of alpha subunits, as well as of certain signal transduction receptors and effectors. This gene uses alternative polyadenylation signals.

Note: This product is for in vitro research use only