

# LGALS3 Antibody

Catalog No: #35747



Orders: [order@signalwayantibody.com](mailto:order@signalwayantibody.com)  
Support: [tech@signalwayantibody.com](mailto:tech@signalwayantibody.com)

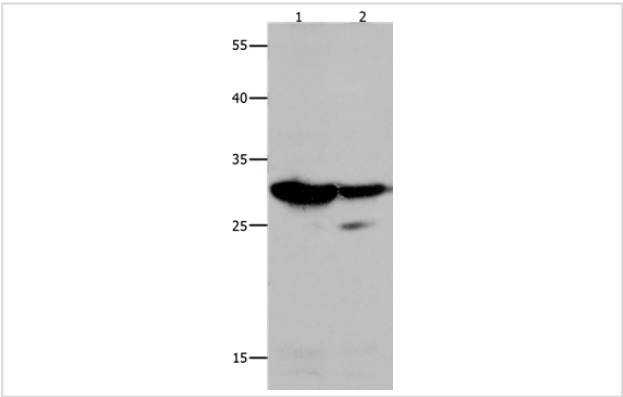
## Description

Product Name	LGALS3 Antibody
Host Species	Rabbit
Clonality	Polyclonal
Purification	Antigen affinity purification.
Applications	WB IHC
Species Reactivity	Hu
Specificity	The antibody detects endogenous levels of total LGALS3 protein.
Immunogen Type	Recombinant Protein
Immunogen Description	Full length fusion protein
Target Name	LGALS3
Other Names	L31; GAL3; MAC2; CBP35; GALBP; GALIG; LGALS2
Accession No.	Swiss-Prot#: P17931NCBI Gene ID: 3958Gene Accssion: BC001120
Uniprot	P17931
GeneID	3958;
SDS-PAGE MW	26kd
Concentration	1.6mg/ml
Formulation	Rabbit IgG in pH7.4 PBS, 0.05% NaN3, 40% Glycerol.
Storage	Store at -20°C

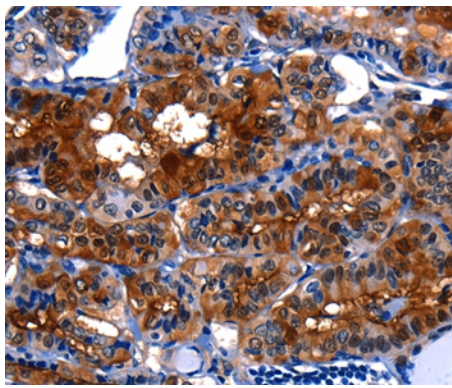
## Application Details

Western blotting: 1:200-1:1000
Immunohistochemistry: 1:10-1:50

## Images



Gel: 10%SDS-PAGE  
Lysates (from left to right): 231 and Hela cell  
Amount of lysate: 30ug per lane  
Primary antibody: 1/100 dilution  
Secondary antibody dilution: 1/8000  
Exposure time: 90 seconds



Immunohistochemical analysis of paraffin-embedded Human thyroid cancer tissue using #35747 at dilution 1/5.

## Background

This gene encodes a member of the galectin family of carbohydrate binding proteins. Members of this protein family have an affinity for beta-galactosides. The encoded protein is characterized by an N-terminal proline-rich tandem repeat domain and a single C-terminal carbohydrate recognition domain. This protein can self-associate through the N-terminal domain allowing it to bind to multivalent saccharide ligands. This protein localizes to the extracellular matrix, the cytoplasm and the nucleus. This protein plays a role in numerous cellular functions including apoptosis, innate immunity, cell adhesion and T-cell regulation. Alternate splicing results in multiple transcript variants.

Note: This product is for in vitro research use only