

UGCG Antibody

Catalog No: #35753

Orders: order@signalwayantibody.comSupport: tech@signalwayantibody.com

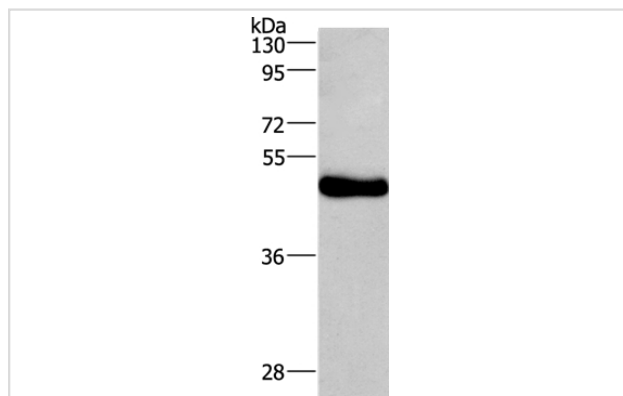
Description

Product Name	UGCG Antibody
Host Species	Rabbit
Clonality	Polyclonal
Purification	Antigen affinity purification.
Applications	WB
Species Reactivity	Hu
Specificity	The antibody detects endogenous levels of total UGCG protein.
Immunogen Type	Recombinant Protein
Immunogen Description	Fusion protein corresponding to a region derived from internal residues of human UDP-glucose ceramide glucosyltransferase
Target Name	UGCG
Other Names	GCS; GLCT1
Accession No.	Swiss-Prot#: Q16739NCBI Gene ID: 7357Gene Accssion: BC038711
Uniprot	Q16739
GeneID	7357;
SDS-PAGE MW	45kd
Concentration	1.9mg/ml
Formulation	Rabbit IgG in pH7.4 PBS, 0.05% NaN ₃ , 40% Glycerol.
Storage	Store at -20°C

Application Details

Western blotting: 1:500-1:2000

Images



Gel: 10%SDS-PAGE
Lysate: 40ug A431 cell
Primary antibody: 1/800 dilution
Secondary antibody dilution: 1/8000
Exposure time: 1 minute

Background

Glycosphingolipids (GSLs) are a group of membrane components that contain lipid and sugar moieties. They are present in essentially all animal cells

and are believed to have important roles in various cellular processes. UDP-glucose ceramide glucosyltransferase catalyzes the first glycosylation step in glycosphingolipid biosynthesis. The product, glucosylceramide, is the core structure of more than 300 GSLs. UGCG is widely expressed and transcription is upregulated during keratinocyte differentiation.

Note: This product is for in vitro research use only