

# CSF2 Antibody

Catalog No: #35758



Orders: [order@signalwayantibody.com](mailto:order@signalwayantibody.com)  
Support: [tech@signalwayantibody.com](mailto:tech@signalwayantibody.com)

## Description

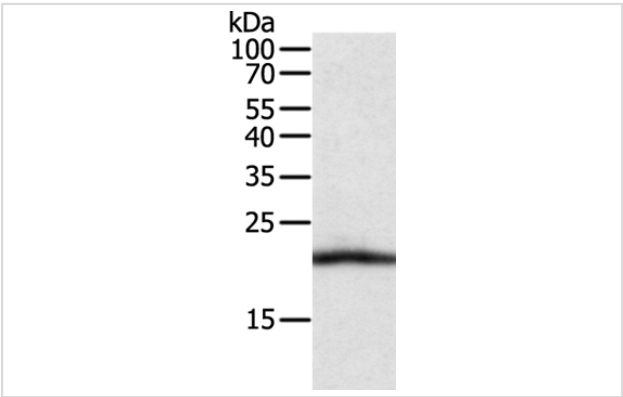
Product Name	CSF2 Antibody
Host Species	Rabbit
Clonality	Polyclonal
Purification	Antigen affinity purification.
Applications	WB IHC
Species Reactivity	Hu Ms
Specificity	The antibody detects endogenous levels of total CSF2 protein.
Immunogen Type	Recombinant Protein
Immunogen Description	Fusion protein corresponding to a region derived from internal residues of human Colony stimulating factor 2 (granulocyte-macrophage)
Target Name	CSF2
Other Names	GMCSF
Accession No.	Swiss-Prot#: P04141NCBI Gene ID: 1437Gene Accssion: BC113999
Uniprot	P04141
GeneID	1437;
SDS-PAGE MW	16kd
Concentration	1.1mg/ml
Formulation	Rabbit IgG in pH7.4 PBS, 0.05% NaN3, 40% Glycerol.
Storage	Store at -20°C

## Application Details

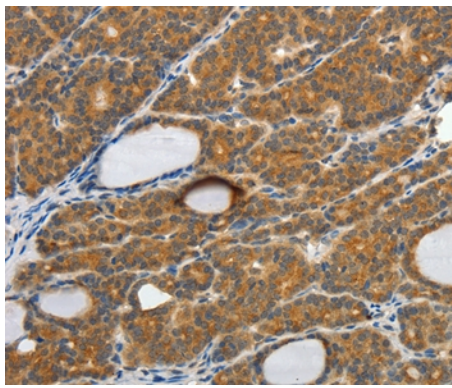
Western blotting: 1:200-1:1000

Immunohistochemistry: 1:50-1:200

## Images



Gel: 12%SDS-PAGE  
Lysate: 40ug RAW264.7 cell  
Primary antibody: 1/500 dilution  
Secondary antibody dilution: 1/8000  
Exposure time: 3 minutes



Immunohistochemical analysis of paraffin-embedded Human thyroid cancer tissue using #35758 at dilution 1/30.

## Background

The protein encoded by this gene is a cytokine that controls the production, differentiation, and function of granulocytes and macrophages. The active form of the protein is found extracellularly as a homodimer. This gene has been localized to a cluster of related genes at chromosome region 5q31, which is known to be associated with interstitial deletions in the 5q- syndrome and acute myelogenous leukemia. Other genes in the cluster include those encoding interleukins 4, 5, and 13.

Note: This product is for in vitro research use only