

HICE1 antibody

Catalog No: #22053



Orders: order@signalwayantibody.com
Support: tech@signalwayantibody.com

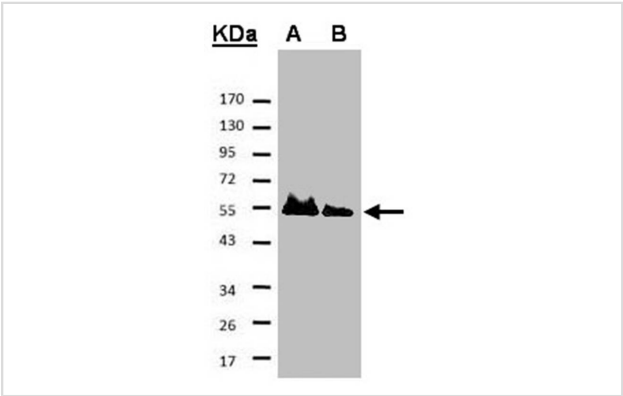
Description

Product Name	HICE1 antibody
Host Species	Rabbit
Clonality	Polyclonal
Purification	Purified by antigen-affinity chromatography.
Applications	WB IHC IF
Species Reactivity	Hu
Target Name	HICE1
Accession No.	Swiss-Prot:Q9BT25Gene ID:93323
Uniprot	Q9BT25
GeneID	93323;
Concentration	0.2mg/ml
Formulation	Supplied in 0.1M Tris-buffered saline with 10% Glycerol (pH7.0). 0.01% Thimerosal was added as a preservative.
Storage	Store at -20°C for long term preservation (recommended). Store at 4°C for short term use.

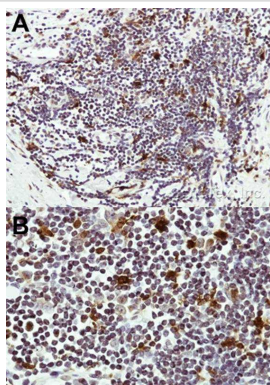
Application Details

Predicted MW:
Western blotting: 1:500-1:2000
Immunohistochemistry: 1:50-1:500
Immunofluorescence: 1:100-1:200

Images

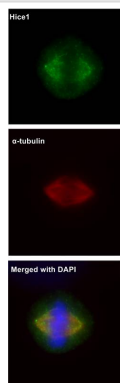


Sample
A: His-Hice1 (2x)
B: His-Hice1 (1x)
7.5% SDS PAGE
Primary antibody diluted at 1: 500



A:Immunohistochemical analysis of paraffin-embedded Human lymph tissue, using HICE1 antibody at 1: 50 dilution.(20X)

B:Immunohistochemical analysis of paraffin-embedded Human lymph tissue, using HICE1 antibody at 1: 50 dilution.(40X)



Immunofluorescence analysis of human osteosarcoma cell line U2OS, using HICE1 antibody at 1: 50-1: 200 dilution.

Background

HAUS8 is 1 of 8 subunits of the 390-kD human augmin complex, or HAUS complex. The augmin complex was first identified in *Drosophila*, and its name comes from the Latin verb 'augmentare,' meaning 'to increase.' The augmin complex is a microtubule-binding complex involved in microtubule generation within the mitotic spindle and is vital to mitotic spindle assembly.

Note: This product is for in vitro research use only