

SPINT1 Antibody

Catalog No: #35764

Orders: order@signalwayantibody.comSupport: tech@signalwayantibody.com

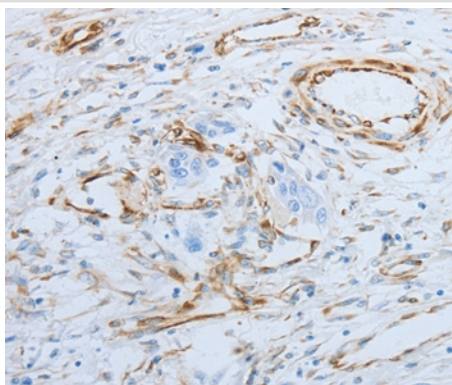
Description

Product Name	SPINT1 Antibody
Host Species	Rabbit
Clonality	Polyclonal
Purification	Antigen affinity purification.
Applications	IHC
Species Reactivity	Hu
Specificity	The antibody detects endogenous levels of total SPINT1 protein.
Immunogen Type	Recombinant Protein
Immunogen Description	Fusion protein corresponding to a region derived from internal residues of human serine peptidase inhibitor, Kunitz type 1
Target Name	SPINT1
Other Names	HAI; HAI1; MANSC2
Accession No.	Swiss-Prot#: O43278NCBI Gene ID: 6692Gene Accssion: BC004140
Uniprot	O43278
GeneID	6692;
Concentration	1.3mg/ml
Formulation	Rabbit IgG in pH7.4 PBS, 0.05% NaN ₃ , 40% Glycerol.
Storage	Store at -20°C

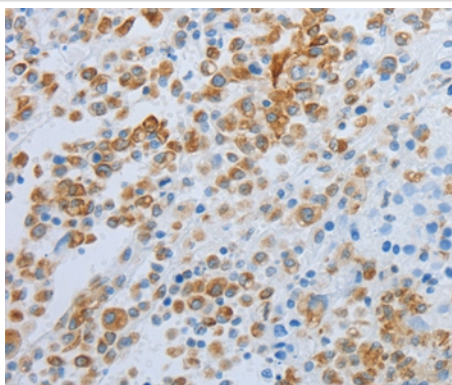
Application Details

Immunohistochemistry: 1:25-1:100

Images



Immunohistochemical analysis of paraffin-embedded Human esophagus cancer tissue using #35764 at dilution 1/25.



Immunohistochemical analysis of paraffin-embedded Human ovarian cancer tissue using #35764 at dilution 1/25.

Background

The protein encoded by this gene is a member of the Kunitz family of serine protease inhibitors. The protein is a potent inhibitor specific for HGF activator and is thought to be involved in the regulation of the proteolytic activation of HGF in injured tissues. Alternative splicing results in multiple variants encoding different isoforms.

Note: This product is for in vitro research use only