

LIPE Antibody

Catalog No: #35771

Orders: order@signalwayantibody.comSupport: tech@signalwayantibody.com

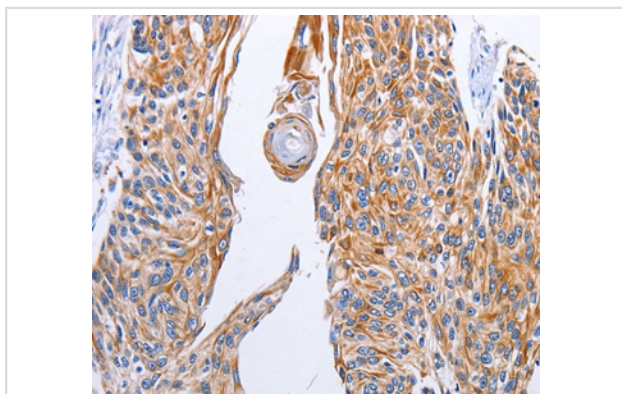
Description

Product Name	LIPE Antibody
Host Species	Rabbit
Clonality	Polyclonal
Purification	Antigen affinity purification.
Applications	IHC
Species Reactivity	Hu
Specificity	The antibody detects endogenous levels of total LIPE protein.
Immunogen Type	Recombinant Protein
Immunogen Description	Fusion protein corresponding to a region derived from internal residues of human lipase, hormone-sensitive
Target Name	LIPE
Other Names	HSL; LHS
Accession No.	Swiss-Prot#: Q05469NCBI Gene ID: 3991Gene Accssion: BC070041
Uniprot	Q05469
GeneID	3991;
Concentration	0.4mg/ml
Formulation	Rabbit IgG in pH7.4 PBS, 0.05% NaN ₃ , 40% Glycerol.
Storage	Store at -20°C

Application Details

Immunohistochemistry: 1:10-1:50

Images



Immunohistochemical analysis of paraffin-embedded Human esophagus cancer tissue using #35771 at dilution 1/10.

Background

The protein encoded by this gene has a long and a short form, generated by use of alternative translational start codons. The long form is expressed in steroidogenic tissues such as testis, where it converts cholesteryl esters to free cholesterol for steroid hormone production. The short form is expressed in adipose tissue, among others, where it hydrolyzes stored triglycerides to free fatty acids.?

Note: This product is for in vitro research use only