

INHBC Antibody

Catalog No: #35781

Orders: order@signalwayantibody.comSupport: tech@signalwayantibody.com

Description

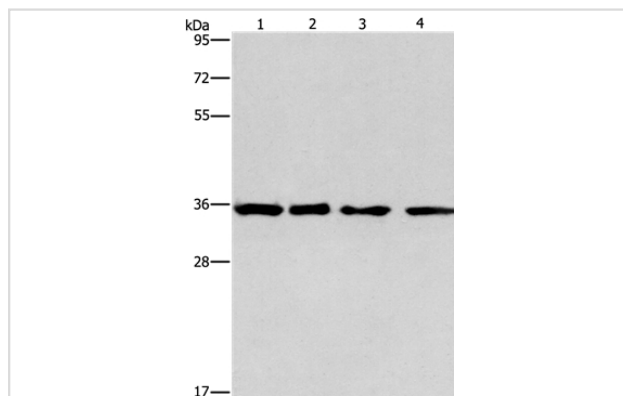
| | |
|-----------------------|--|
| Product Name | INHBC Antibody |
| Host Species | Rabbit |
| Clonality | Polyclonal |
| Purification | Antigen affinity purification. |
| Applications | WB IHC |
| Species Reactivity | Hu |
| Specificity | The antibody detects endogenous levels of total INHBC protein. |
| Immunogen Type | Recombinant Protein |
| Immunogen Description | Fusion protein corresponding to a region derived from internal residues of human inhibin, beta C |
| Target Name | INHBC |
| Other Names | IHBC |
| Accession No. | Swiss-Prot#: P55103NCBI Gene ID: 3626Gene Accssion: BC130324 |
| Uniprot | P55103 |
| GeneID | 3626; |
| SDS-PAGE MW | 38kd |
| Concentration | 0.5mg/ml |
| Formulation | Rabbit IgG in pH7.4 PBS, 0.05% NaN ₃ , 40% Glycerol. |
| Storage | Store at -20°C |

Application Details

Western blotting: 1:500-1:2000

Immunohistochemistry: 1:50-1:200

Images



Gel: 10%SDS-PAGE

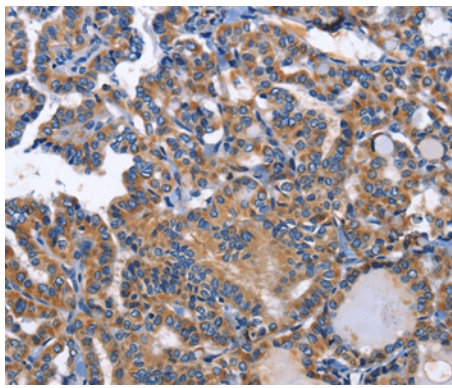
Lysates (from left to right): 293T, hepG2, hela and A549 cell

Amount of lysate: 40ug per lane

Primary antibody: 1/550 dilution

Secondary antibody dilution: 1/8000

Exposure time: 1 minute



Immunohistochemical analysis of paraffin-embedded Human thyroid cancer tissue using #35781 at dilution 1/50.

Background

This gene encodes the beta C chain of inhibin, a member of the TGF-beta superfamily. This subunit forms heterodimers with beta A and beta B subunits. Inhibins and activins, also members of the TGF-beta superfamily, are hormones with opposing actions and are involved in hypothalamic, pituitary, and gonadal hormone secretion, as well as growth and differentiation of various cell types.

Note: This product is for in vitro research use only