

## ITGB6 Antibody

Catalog No: #35783

Orders: [order@signalwayantibody.com](mailto:order@signalwayantibody.com)Support: [tech@signalwayantibody.com](mailto:tech@signalwayantibody.com)

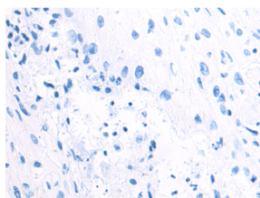
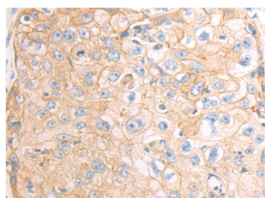
## Description

Product Name	ITGB6 Antibody
Host Species	Rabbit
Clonality	Polyclonal
Purification	Antigen affinity purification.
Applications	IHC
Species Reactivity	Hu
Specificity	The antibody detects endogenous levels of total ITGB6 protein.
Immunogen Type	Recombinant Protein
Immunogen Description	Fusion protein corresponding to a region derived from internal residues of human integrin, beta 6
Target Name	ITGB6
Other Names	ITGB6;ITB6;beta 6; integrin
Accession No.	Swiss-Prot#: P18564NCBI Gene ID: 3694Gene Accssion: BC121178
Uniprot	P18564
GeneID	3694;
Concentration	1.0mg/ml
Formulation	Rabbit IgG in pH7.4 PBS, 0.05% NaN <sub>3</sub> , 40% Glycerol.
Storage	Store at -20°C

## Application Details

Immunohistochemistry: 1:25-1:100

## Images



The image on the left is immunohistochemistry of paraffin-embedded Human esophagus cancer tissue using ITGB6 Antibody at dilution 1/70, on the right is treated with fusion protein. (Original magnification:  $\times 200$ )

## Background

Integrin beta-6 is a protein that in humans is encoded by the ITGB6 gene. Integrin, beta 6 has been shown to interact with FHL2. Integrin alpha-V/beta-6 is a receptor for fibronectin and cytactin. It recognizes the sequence R-G-D in its ligands. Internalisation of integrin alpha-V/beta-6 via clathrin-mediated endocytosis promotes carcinoma cell invasion.

---

Note: This product is for in vitro research use only